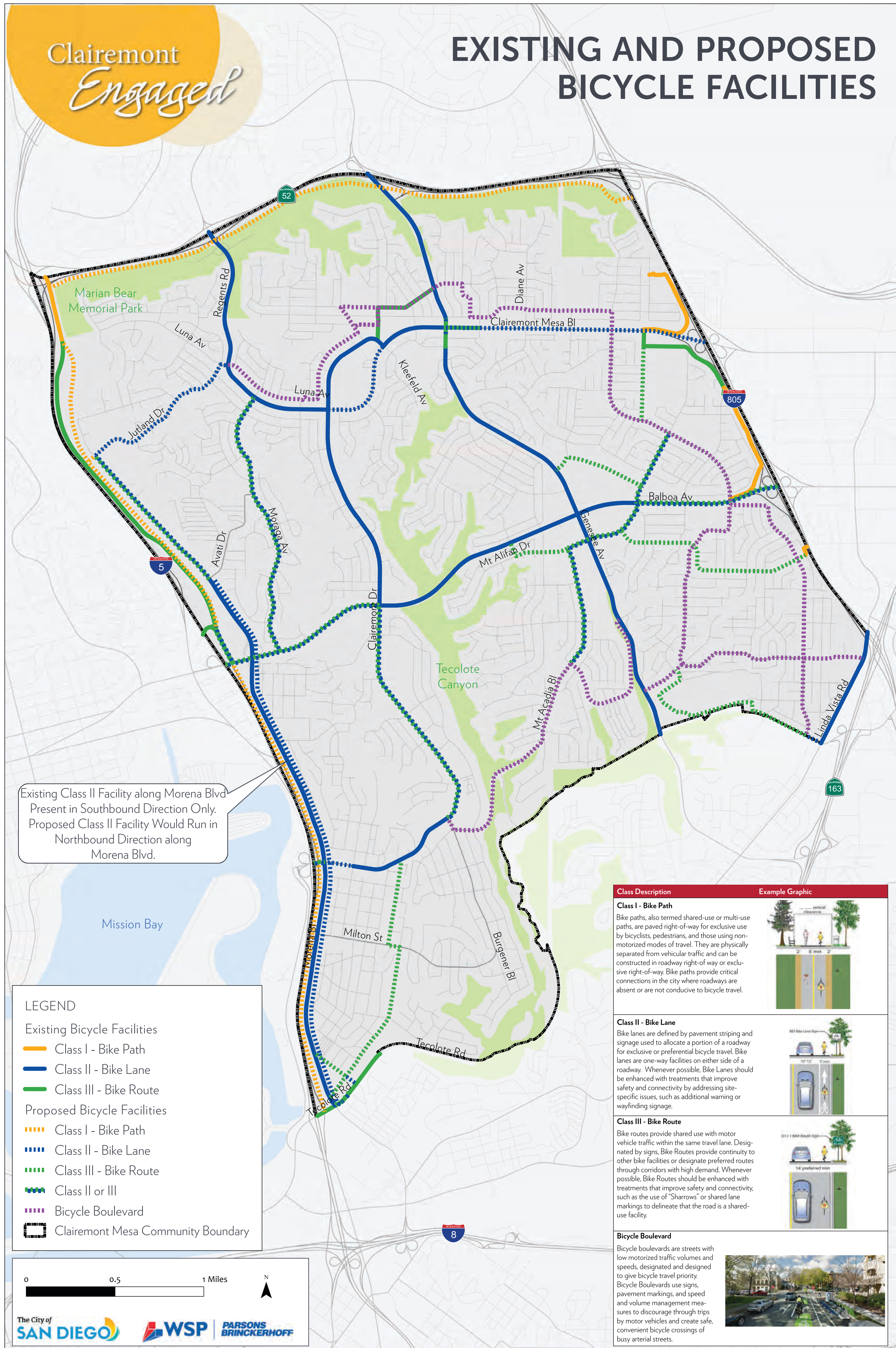


WHAT DOES THIS SHOW?

The is part of a series of maps describing existing conditions for Mobility that were presented as part of the Clairemont Community Plan Update Workshop on April 20, 2017.

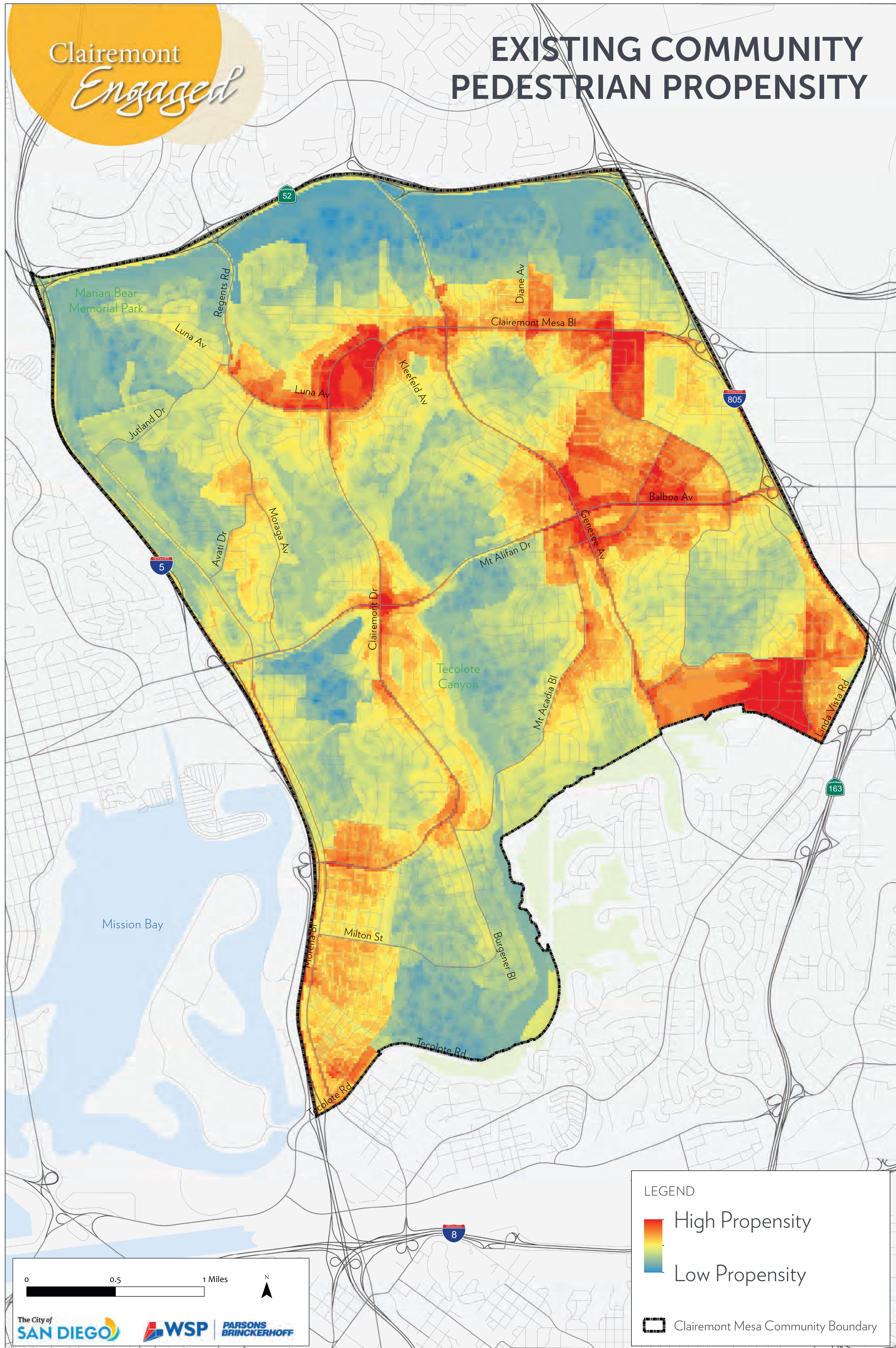
This map indicates the location of existing bicycle facilities within Clairemont as well as proposed facilities per the Bicycle Master Plan effort. The Bicycle Master Plan was a previous planning effort that provides the City of San Diego with a strong framework for improving bicycling in San Diego.



WHAT DOES THIS SHOW?

This is part of a series of maps describing existing conditions for Mobility that were presented as part of the Clairemont Community Plan Update Workshop on April 20, 2017.

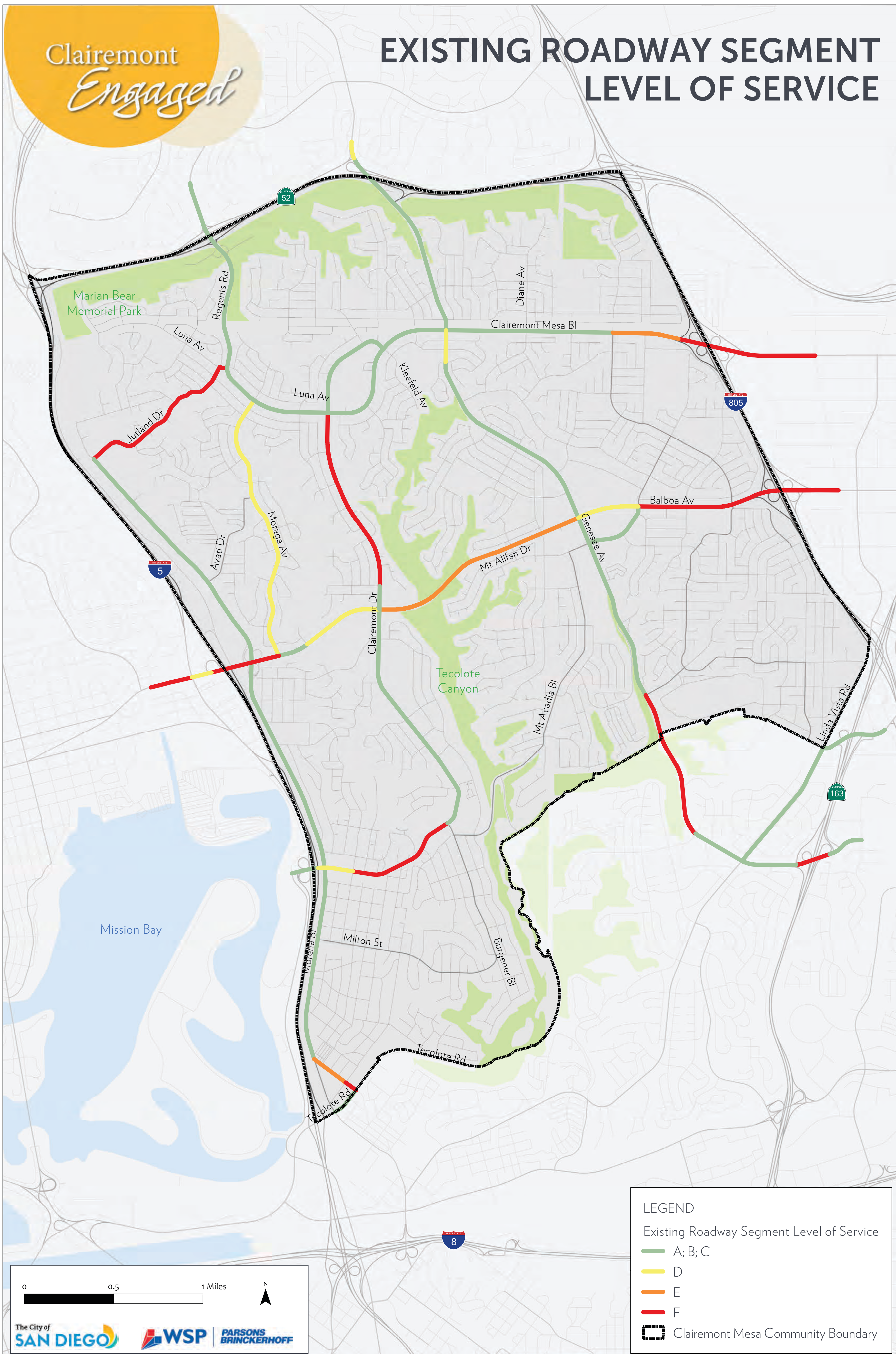
The City of San Diego's Pedestrian Priority Model was used to identify pedestrian propensity within the Clairemont Community. The PPM determines demand based on three factors: pedestrian trip attractors, generators, and detractors.



WHAT DOES THIS SHOW?

This is part of a series of maps describing existing conditions for Mobility that were presented as part of the Clairemont Community Plan Update Workshop on April 20, 2017.

This map indicates a comparison of existing vehicular data and roadway segment capacity analysis within the Clairemont community. The analysis of roadway segment level of service is based on the functional classification of the roadway, the maximum capacity, roadway geometrics, and existing vehicular data.



WHAT DOES THIS SHOW?

This is part of a series of maps describing existing conditions for Mobility that were presented as part of the Clairemont Community Plan Update Workshop on April 20, 2017.

This map indicates all transit routes currently serving the community of Clairemont.

