

Mobility Element Comments,
Glen Schmidt, FASLA

March 11, 2020

CLAIREMONT COMMUNITY PLAN UPDATE
COMMUNITY DISCUSSION DRAFT
JANUARY 2020



Consistent Community Vision

Community Improvement Vision Plan

An Action Plan for Improvements to the Community of
Clairemont Mesa



Claire Burgener at the Clairemont Mesa monument sign dedication

Prepared by the Clairemont Town Council

Adopted by the Clairemont Town Council
September 6, 2001

A Community Vision 2001

Vision Statement, Clairemont Mesa:

Through personal involvement and proactive government support, we will maintain the predominantly low density character of our community. We will preserve the valuable canyons and open spaces that make our community unique. Our community will be family oriented, caring, and diverse with “walkable” well lit tree lined streets where people are comfortable day and night. Our community will promote and maintain opportunities for local employment, vibrant business districts, community support services, ample recreation and quality education.

1. Ownership and Stewardship
2. A Safe Community
3. Opportunities for Interaction and Socialization
4. Quality Schools and Educational Opportunities
5. Access to Goods, Services, and Public Resources
6. Physically Attractive
7. Environmental Stewardship
8. Cultural Diversity
9. Access to Recreation, Nature and Open Space
10. Quality Transportation (and “Walkability”)
11. Economic Opportunities

FIGURE 1-2: CLAIREMONT NEIGHBORHOODS

Current proposed
Clairemont
Neighborhoods within
the CPU

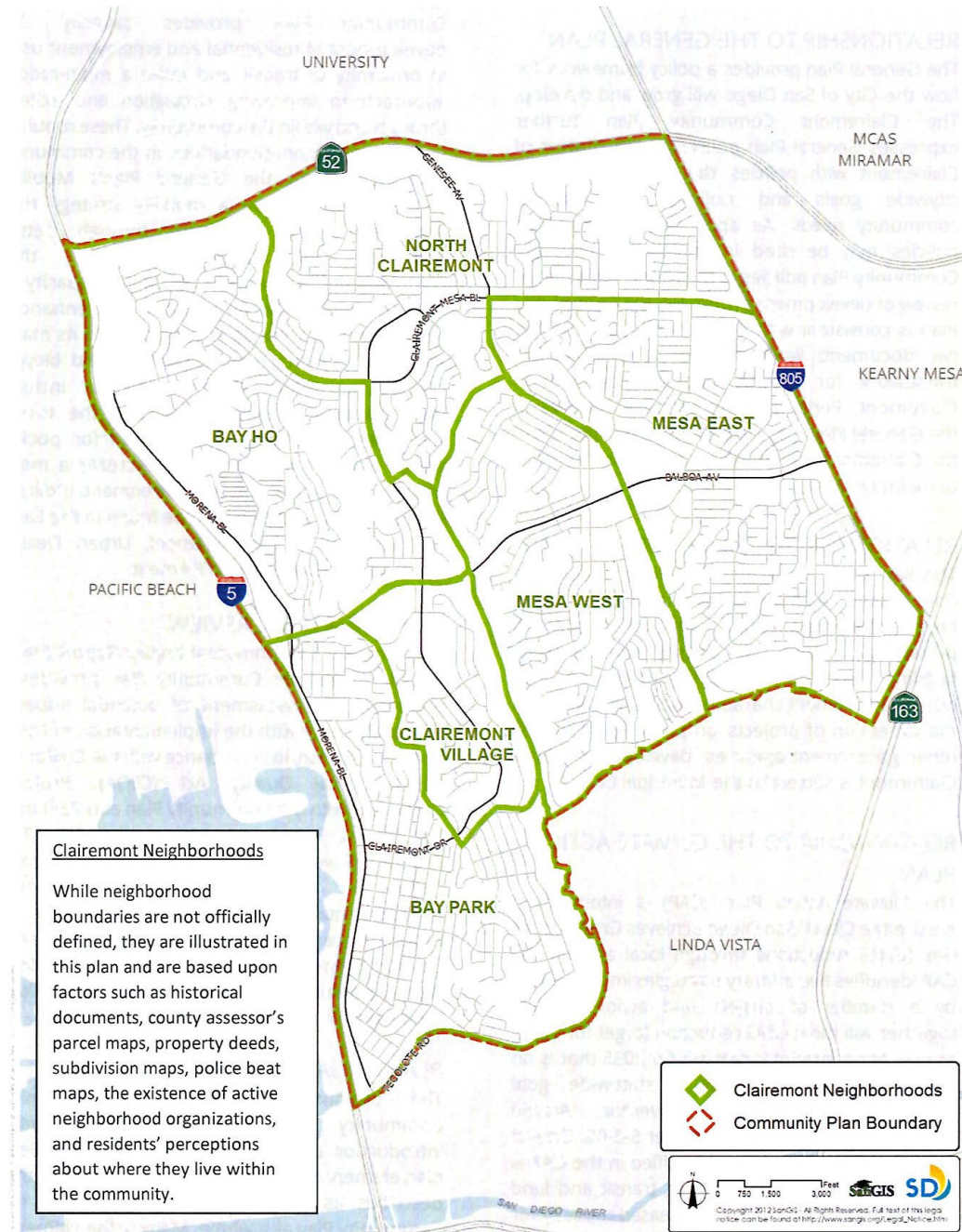


FIGURE 1-2: CLAIREMONT NEIGHBORHODS

Proposed Clairemont
Neighborhoods without a
separate Clairemont Village
Neighborhood

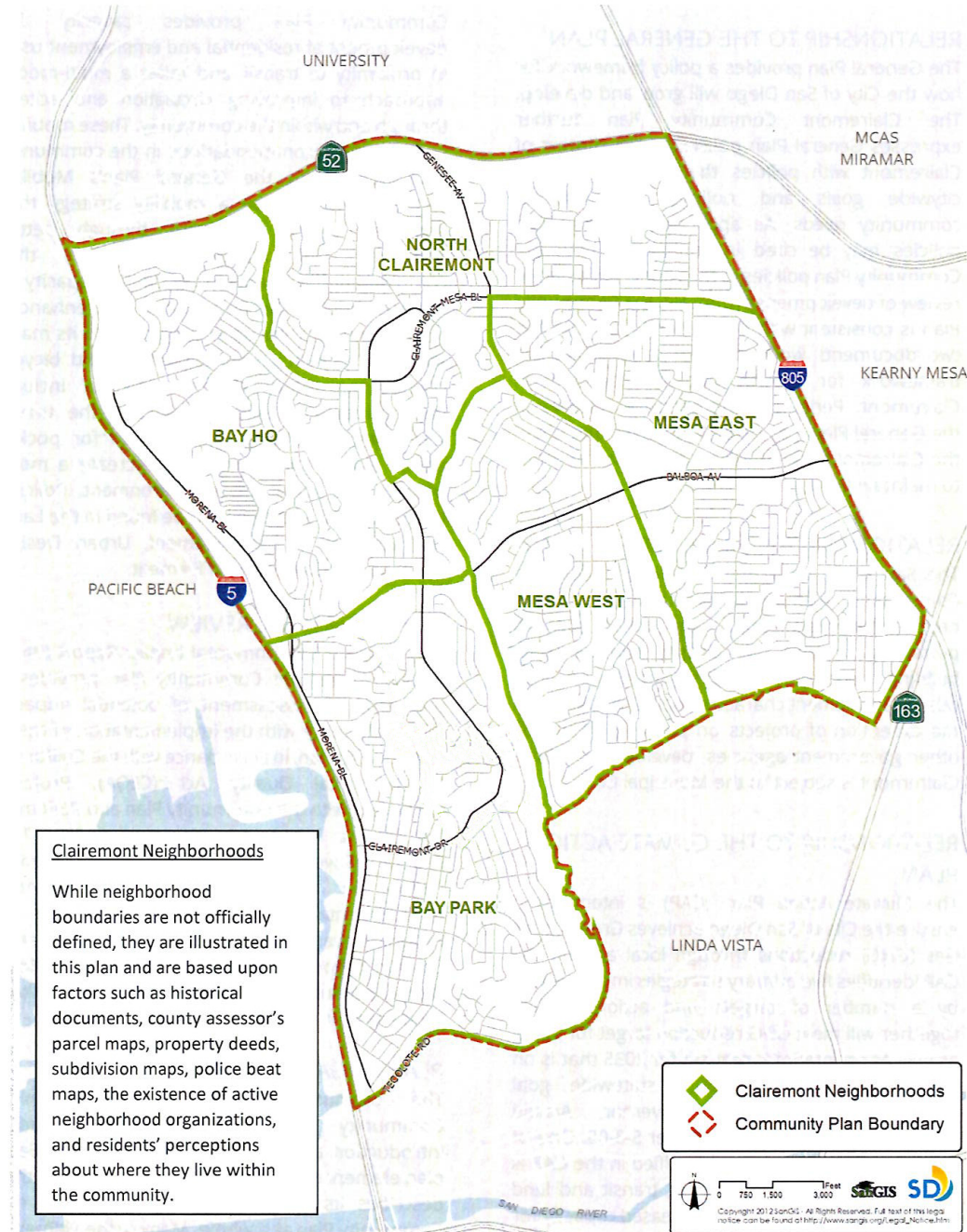
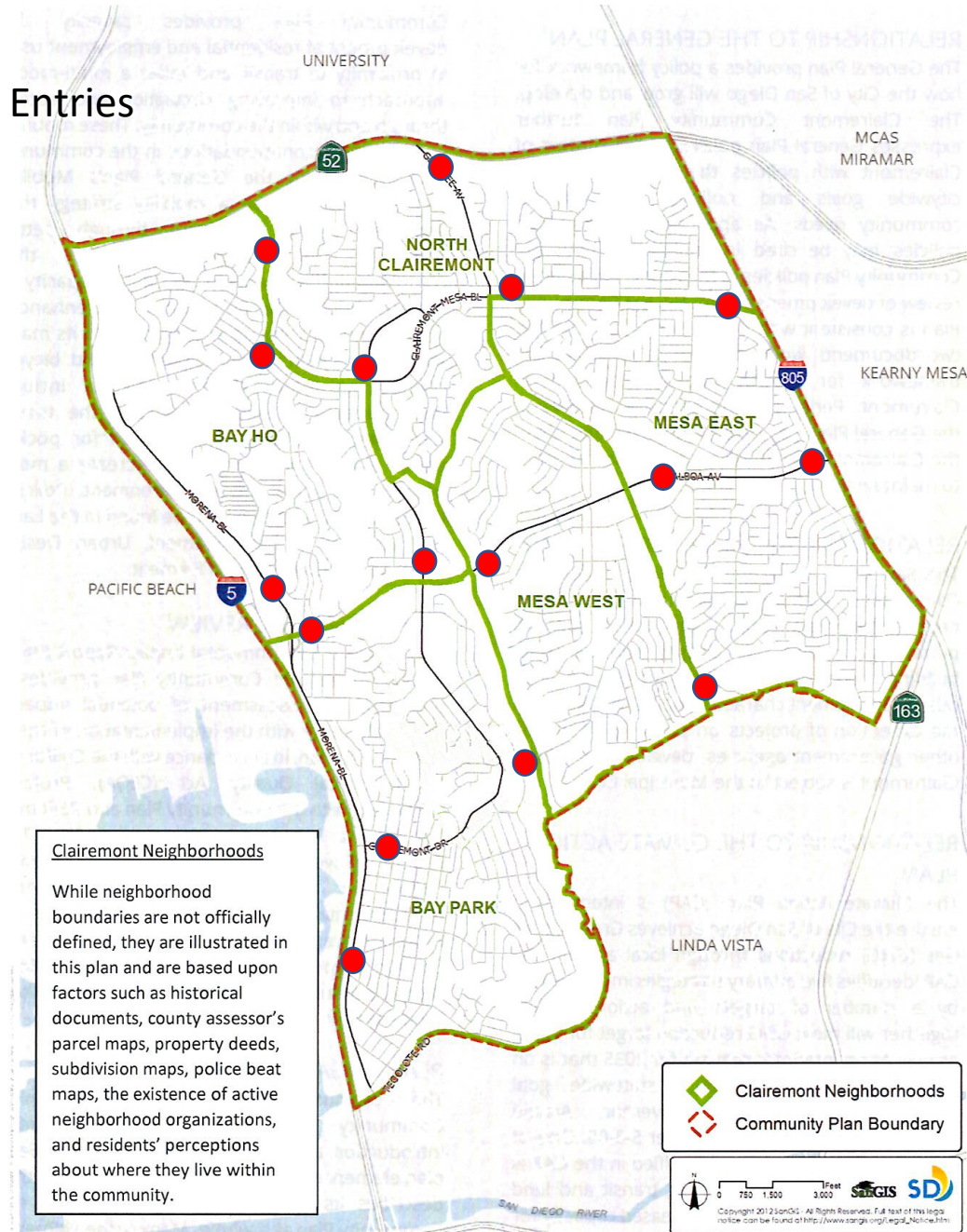


FIGURE 1-2: CLAIREMONT NEIGHBORHOODS

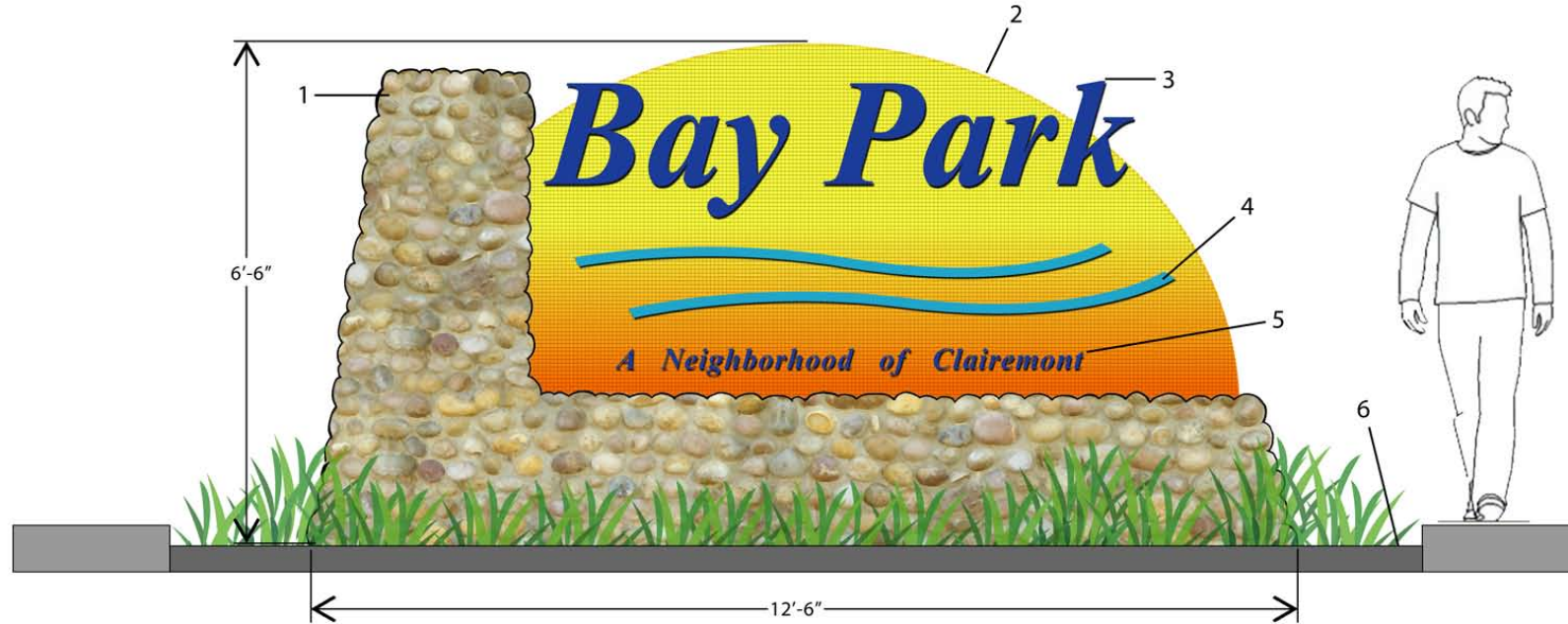
Study Clairemont / Neighborhood Entries and Monuments



Neighborhood Identity Example

Key Notes: 1) Local Clairemont cobble stone over CMU block or poured in place concrete. 2) 1" Square ceramic tile sunset backdrop over CMU block or poured in place concrete. 3) 16" high navy blue powder coated steel lettering. 4) Light blue powder coated steel banding. 5) 4" high navy blue powder coated steel lettering. 6) Finish Grade.

General Notes: a) Light with ground mounted wash light. b) All Fonts to be Times New Roman PS MT in Bold Italic. c) All lettering to be 1/4" thick metal.



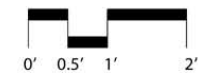
Claremont Drive Community Sign
Front Elevation

SCHMIDT DESIGN GROUP, INC.
BALANCING ARTISTIC EXPRESSION IN DESIGN
WITH ENVIRONMENTAL SENSITIVITY
2655 Fourth Avenue, San Diego, CA 92103
telephone (619) 236-1462 facsimile (619) 236-8792
www.schmidt-design.com
Lic. CA 2138, NV 219, AZ 34139

Claremont Drive Community Sign Committee
Glen Schmidt (Chair), Susan Mournian, Dave Konstantin, Dave Potter, Billy Paul, Ryan Rolla,
Fiona Theseira, Lori Sorbo, Keith Rhodes, Warren baynard.

Keith Corry, Council Representative
Councilmember Donna Frye

Sheet 1 of 4

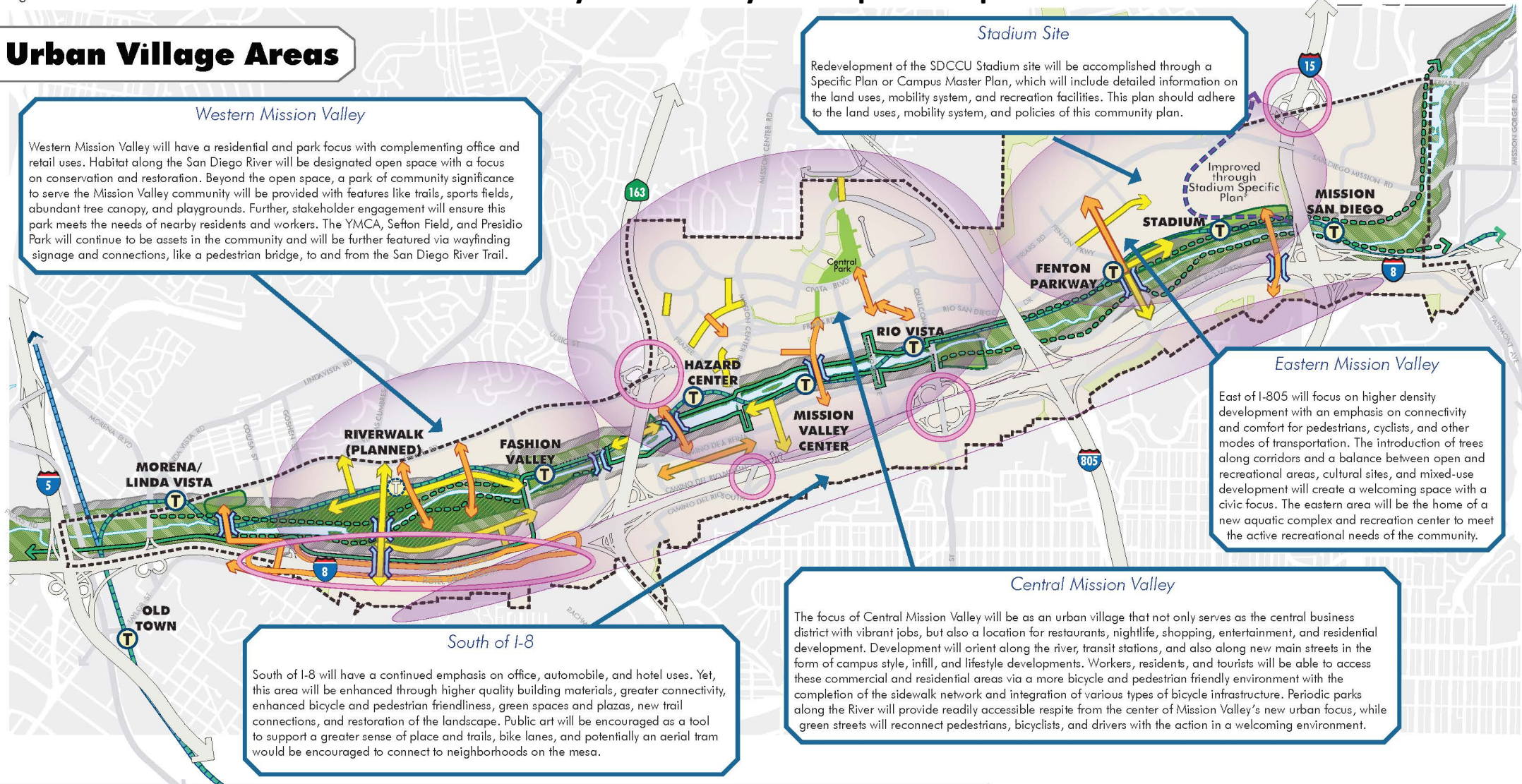


Scale: 3/4" = 1'-0"
Project No.: 09-404
Date: August 11, 2009

Figure 3

Mission Valley Community Plan Update September 2019

Urban Village Areas



General Information

- Mission Valley Community Plan Area
- San Diego River

Transit

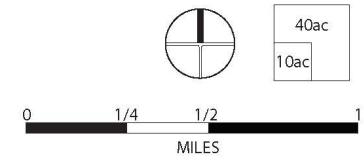
- Existing Trolley (Blue Line)
- Existing Trolley (Green Line)
- Planned Trolley (Purple Line)
- Planned Trolley Stop (Riverwalk)

Circulation Improvement

- Roadway Connection
- Pedestrian/Bicycle Connection
- New Bridge
- Existing San Diego River Pathway
- Proposed San Diego River Pathway
- Intersection/Interchange Improvement

Park and Open Space

- Existing Park
- Existing Open Space
- Potential Park/Open Space
- River Corridor
- River Influence Area

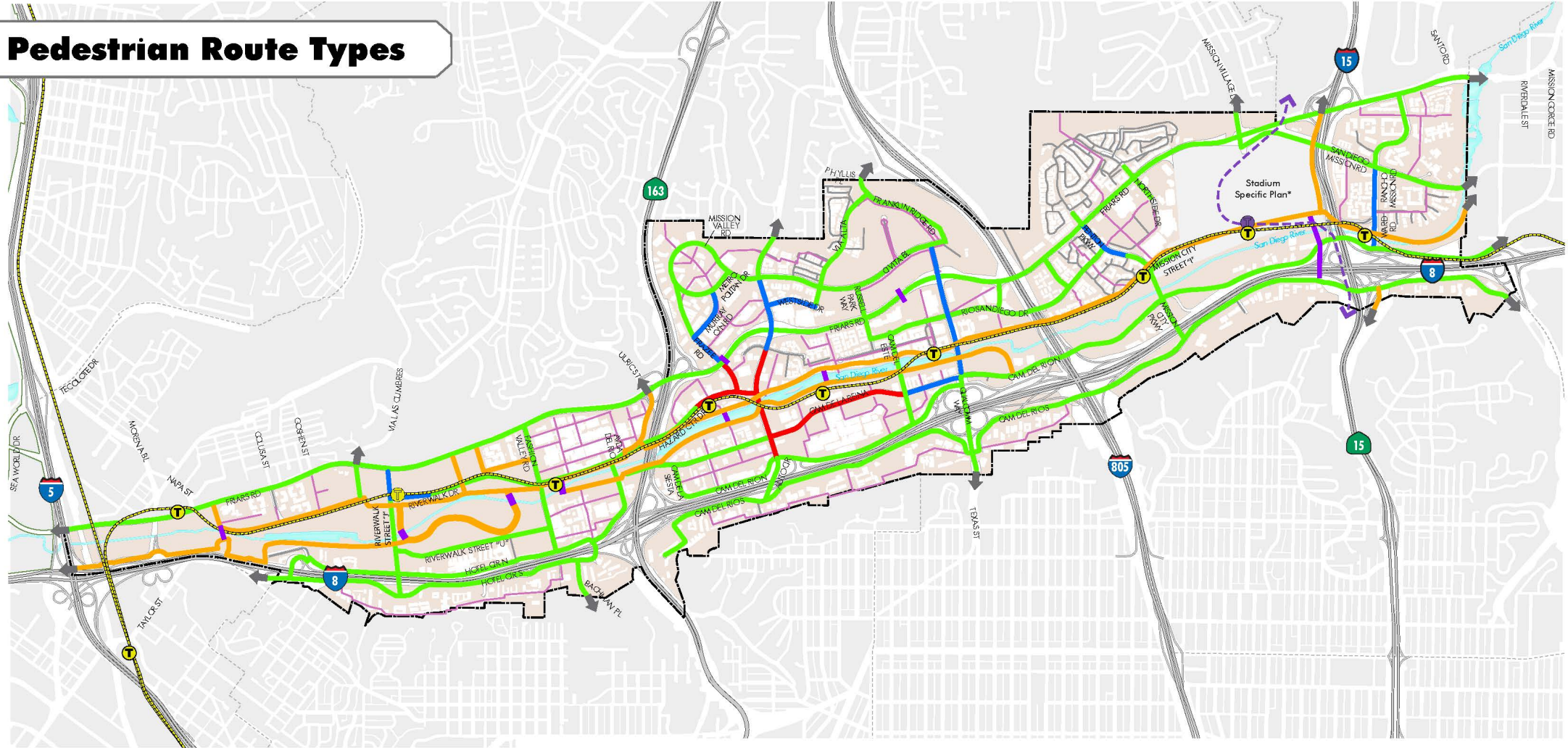


*Additional infrastructure will be recommended through the specific plan.

Figure 5

Mission Valley Community Plan Update September 2019


Pedestrian Route Types

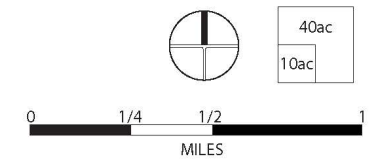


General Information

-  Trolley Stops
-  Planned/Proposed Trolley Stops
-  San Diego Trolley Purple Line (Planned)
-  Light Rail
-  Freeways
-  Ramps
-  Mission Valley Community Plan Boundary
-  Community Planning Areas

Pedestrian Route Type

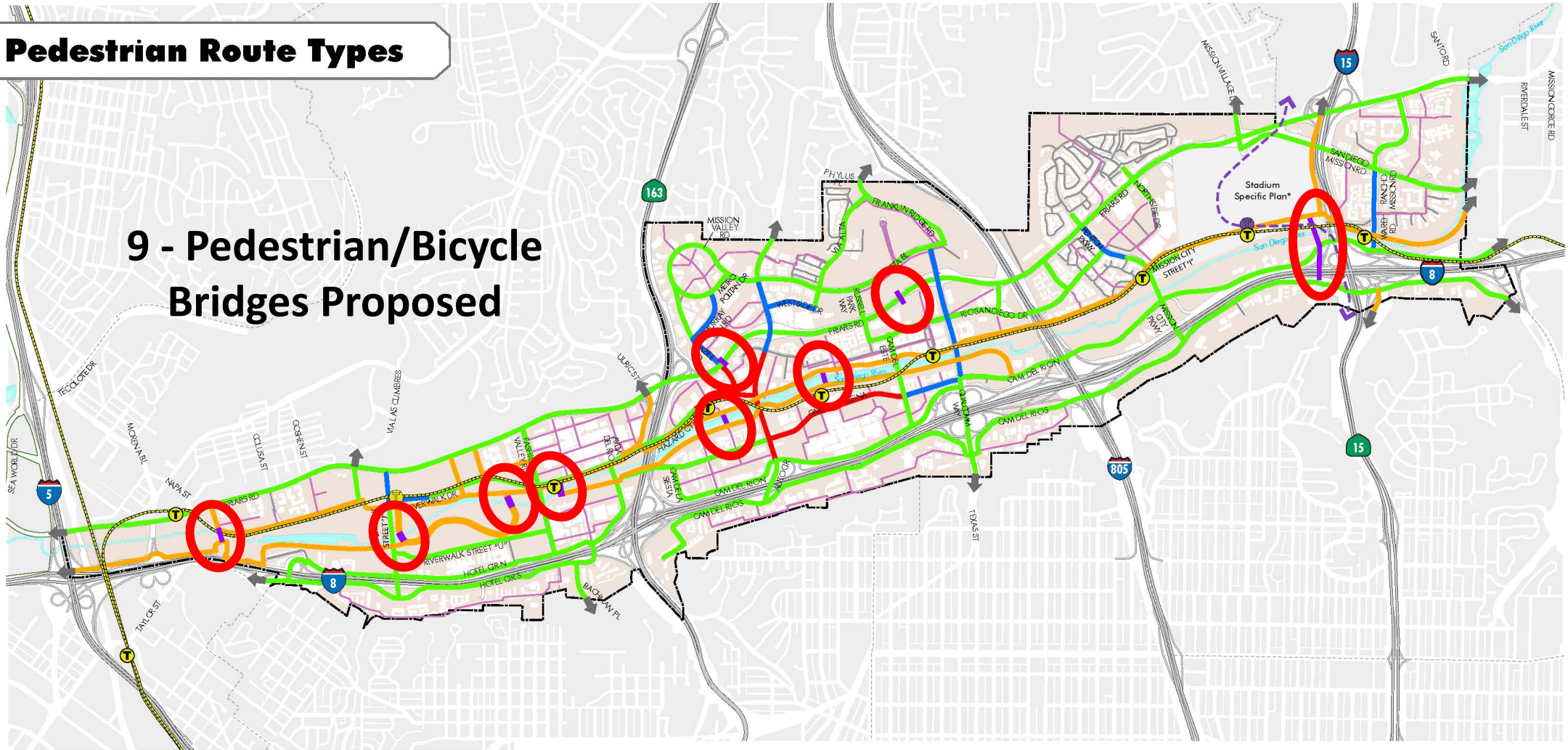
-  District (heavy pedestrian levels)
-  Corridor (moderate pedestrian levels)
-  Connector (low pedestrian levels)
-  Neighborhood
-  Paseo
-  Path
-  Pedestrian/Bicycle Bridge



*Additional infrastructure will be recommended through the specific plan.

Pedestrian Route Types

9 - Pedestrian/Bicycle Bridges Proposed



General Information

- Trolley Stops
- Planned/Proposed Trolley Stops
- San Diego Trolley Purple Line (Planned)
- Light Rail
- Freeways
- Ramps
- San Diego River
- Mission Valley Community Plan Boundary
- Community Planning Areas

Pedestrian Route Type

- District (heavy pedestrian levels)
- Corridor (moderate pedestrian levels)
- Connector (low pedestrian levels)
- Neighborhood
- Paseo
- Park
- Pedestrian/Bicycle Bridge

*Additional infrastructure will be recommended through the specific plan.

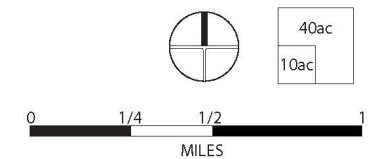


Figure 13: Examples of Implementation of New Transit-Serving Amenities Adjacent to the Mission Valley Center Transit Station



Potential Future Condition: Plaza Ground View



- | | |
|--|--|
| 1. Mixed-Use Development | 10. Electric Vehicle Parking and Charging Stations |
| 2. Commercial Frontages Leading to Transit Station | 11. Dedicated, Secured Bicycle and Scooter Parking |
| 3. Public or Private Street | 12. Pedestrian Path to Transit Station |
| 4. Mobility Hub and Transit-Serving Retail | 13. Transit Plaza Park |
| 5. Retail Plaza for Food and Beverage Services | 14. Loading Areas for Ride-Share Vehicles |
| 6. San Diego River | 15. Proposed Pedestrian Bridge |
| 7. Light Rail Transit Station | 16. Amphitheater/Shaded Gathering Space |
| 8. Bus Stop | 17. Marked Pedestrian Crosswalks |
| 9. Mission Valley Mall | 18. Landscape Buffer Along Trolley Right-of-Way |

Figure 6: Example Implementation of a Multi-Use Bridge Across Friars Road at Frazee Road

A multi-use bridge at this location can be designed to integrate with both the street and the surrounding development. This bridge would provide an unobstructed link between the properties north of Friars Road and the Hazard Center Trolley Station, just south of Friars Road and accessed by Frazee Road. This bridge could be designed as a statement piece, adding character to the area, as well as a gateway, welcoming people into the community.



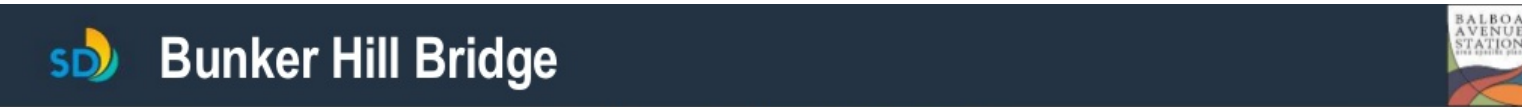
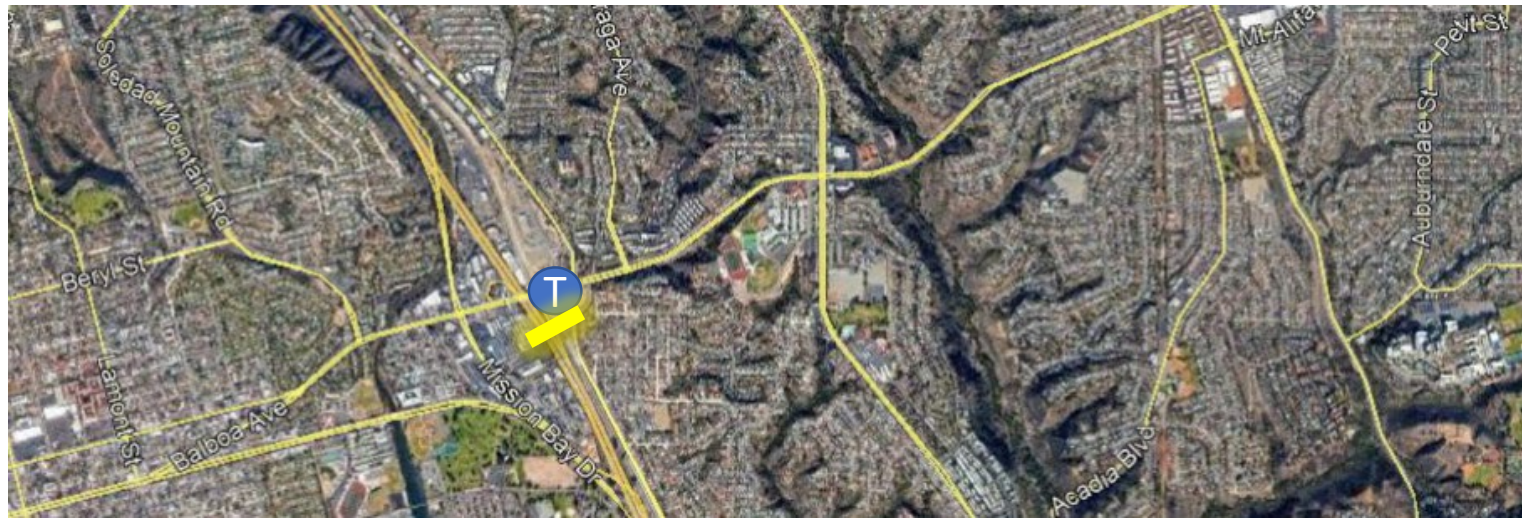
Proposed Pedestrian/Bicycle Bridges for Claremont

Pedestrian/bicycle
bridges near
Trolley Stations at
Balboa,
Claremont Drive,
and Tecolote.



Pedestrian/Bicycle Bridges for Clairemont

Illustration of the proposed pedestrian/bicycle bridge which was included in the Balboa Station Specific Plan before being removed.



Before



After

- Proposed Street Improvements
- Potential Redevelopment
- Pedestrian and Bicycle Bridge Connection from Bunker Hill Drive to Balboa Avenue Station



Roosevelt Island Tram, New York

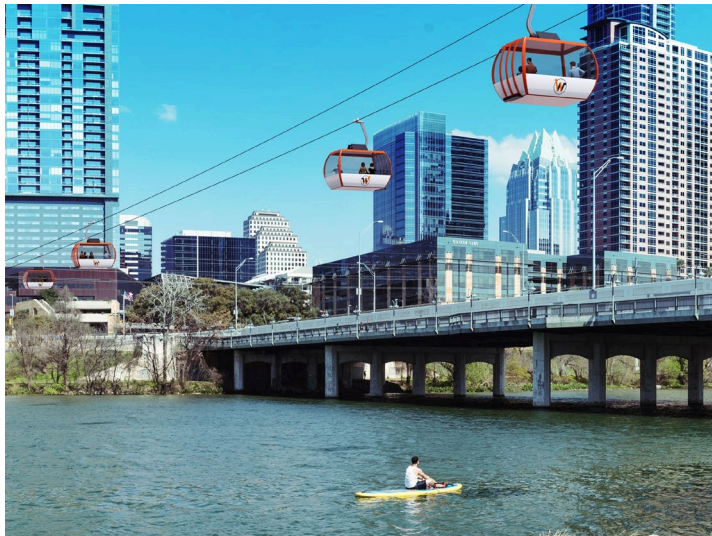


Mi Telefericacío in La Paz, Bolivia



Metrocable Gondola in Medellín, Colombia

Existing Urban Tram Examples



Austin, Texas



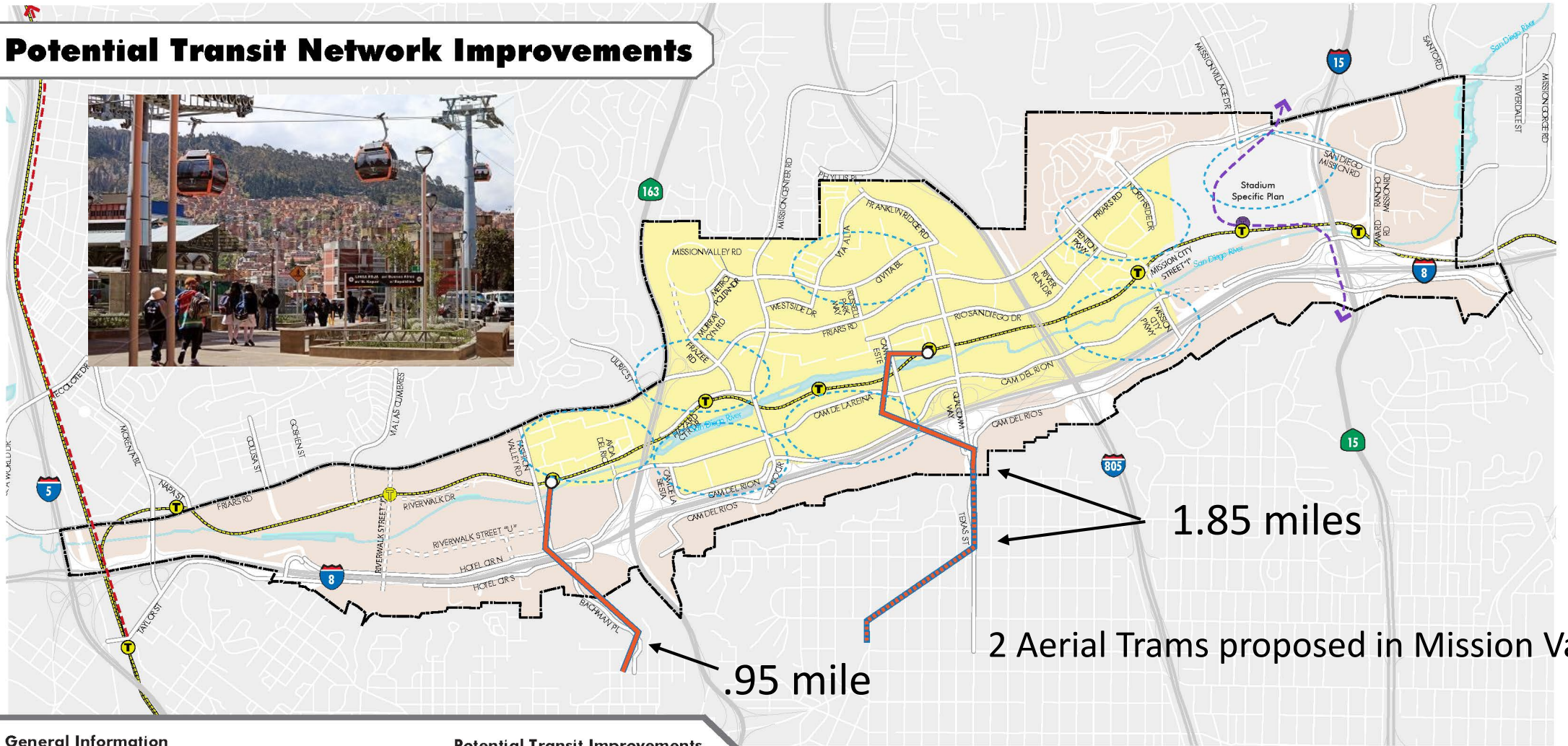
Los Angeles, CA



San Diego, CA

Proposed Urban Tram Examples Under Study

Potential Transit Network Improvements



General Information

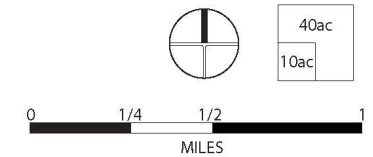
- Planned Roadway
- Freeways
- Ramps
- San Diego Trolley Purple Line (Planned)
- Red Line (Planned)

- San Diego River
- Mission Valley Community Plan Boundary
- Trolley Stops
- Planned/Proposed Trolley Stops

Potential Transit Improvements

- Potential Skyways*
- Potential Skyway Extension*
- Potential Circulator Service Area
- Potential Circulator Destinations

*Alignments are for illustrative purposes and will require further study before implementation.



1.85 miles

2 Aerial Trams proposed in Mission Valley

.95 mile



Can Aerial Tram's be considered for Clairemont?

As well as in Linda Vista to provide access to the Beach?



Village to Balboa Station (2.2 miles)

Tecolote Station to Sea World, and to the Mission Beach (3 miles)

Google Earth

© 2020 Google
Data SIO, NOAA, U.S. Navy, NGA, GEBCO



- Aerial Tram's
- Pedestrian/Bicycle Bridges



Village to Balboa Station (2.2 miles)

Tecolote Station to Sea World, and to the Mission Beach (3 miles)

Google Earth

© 2020 Google
Data SIO, NOAA, U.S. Navy, NGA, GEBCO

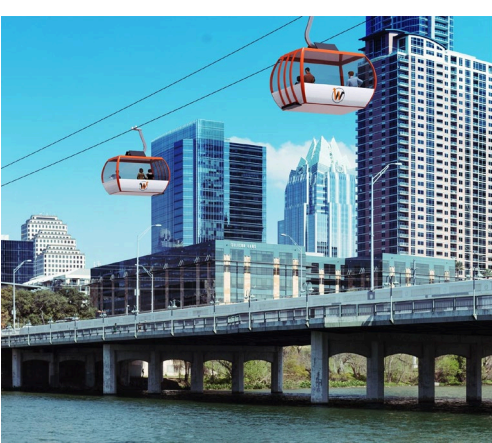
Clairemont's Green Spine Trail and Open Space



SDGE power line easement
through Clairemont

4.5 miles x 150 ft wide.
Approximately 80 acres of
open space





- Aerial Tram's
- Pedestrian/Bicycle Bridges
- Green Spine Pedestrian Trail and more

Google Earth

© 2020 Google
Data SIO, NOAA, U.S. Navy, NGA, GEBCO

These are just a few examples. In the final CPU please don't short-change our community and provide us with a dynamic true

Vision for our beloved community of **Clairemont**

