



Clairemont

Engaged

Clairemont Mesa
Community Plan Update:
Mobility

Planning Department

June 11, 2019

Alcott Elementary School





1. Introduction
2. Mobility Planning
3. Initial Public Outreach
4. Existing Conditions Report
5. Existing Mobility Goals
6. Potential Opportunities
7. Next Steps



Clairemont Community Plan Update

Mobility Planning

“Improve mobility through development of a balanced, multimodal transportation network”

Mobility Element





Clairemont Community Plan Update

Initial Public Outreach



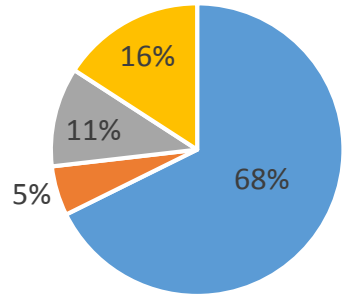
Clairemont Community Plan Update

Initial Outreach



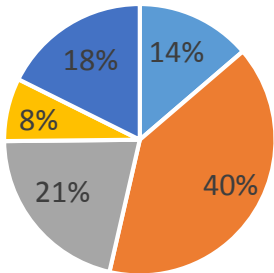
Mobility Commuting Questionnaire

How do you currently commute to work/school, within the community?



■ Vehicle ■ Transit ■ Bike ■ Ped

Which other mode of travel are you willing to try?



■ Vehicle ■ Transit ■ Bike ■ Ped ■ None

- How do you currently commute within the community?
- Which other mode of travel are you willing to try?
- What would encourage you to use another mode of travel?

Results

- 68% currently commute using a vehicle (Some indicated carpool)
- 40% are willing to try transit (trolley or bus)

Top ranked improvements to encourage travel by another mode of transportation:

- On-demand shuttle service
- Improved bike facilities
- Access to trolley station
- Shuttle service



Mobility – Issues and Opportunities Map

Issues and Improvements mentioned include:

- Ped/Bike connections to Mission Bay
- Concern of single SB lane along Morena Boulevard
- Addition of bicycle facility connections to Pacific Beach, Rose Creek Trail, Rose Canyon Bike Path, Clairemont Drive
- Gaps in bike network along Balboa Avenue and Clairemont Mesa
- Missing sidewalks southern portion of community
- Transit improvements (bus pull out) & opportunity for transit center (Clairemont Town Center & Genesee Plaza)





Clairemont Community Plan Update

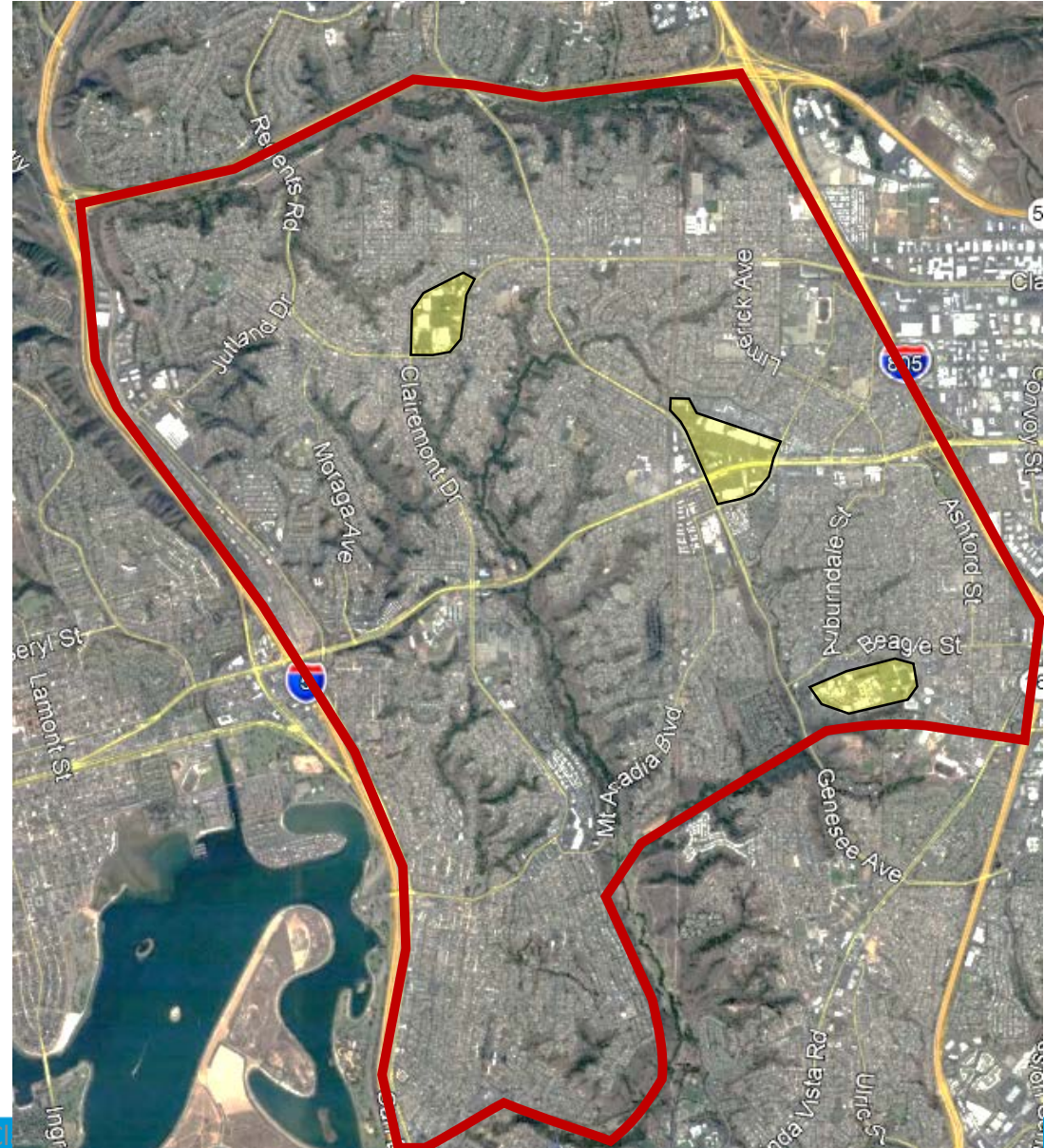
Existing Conditions Report

Existing Conditions Report

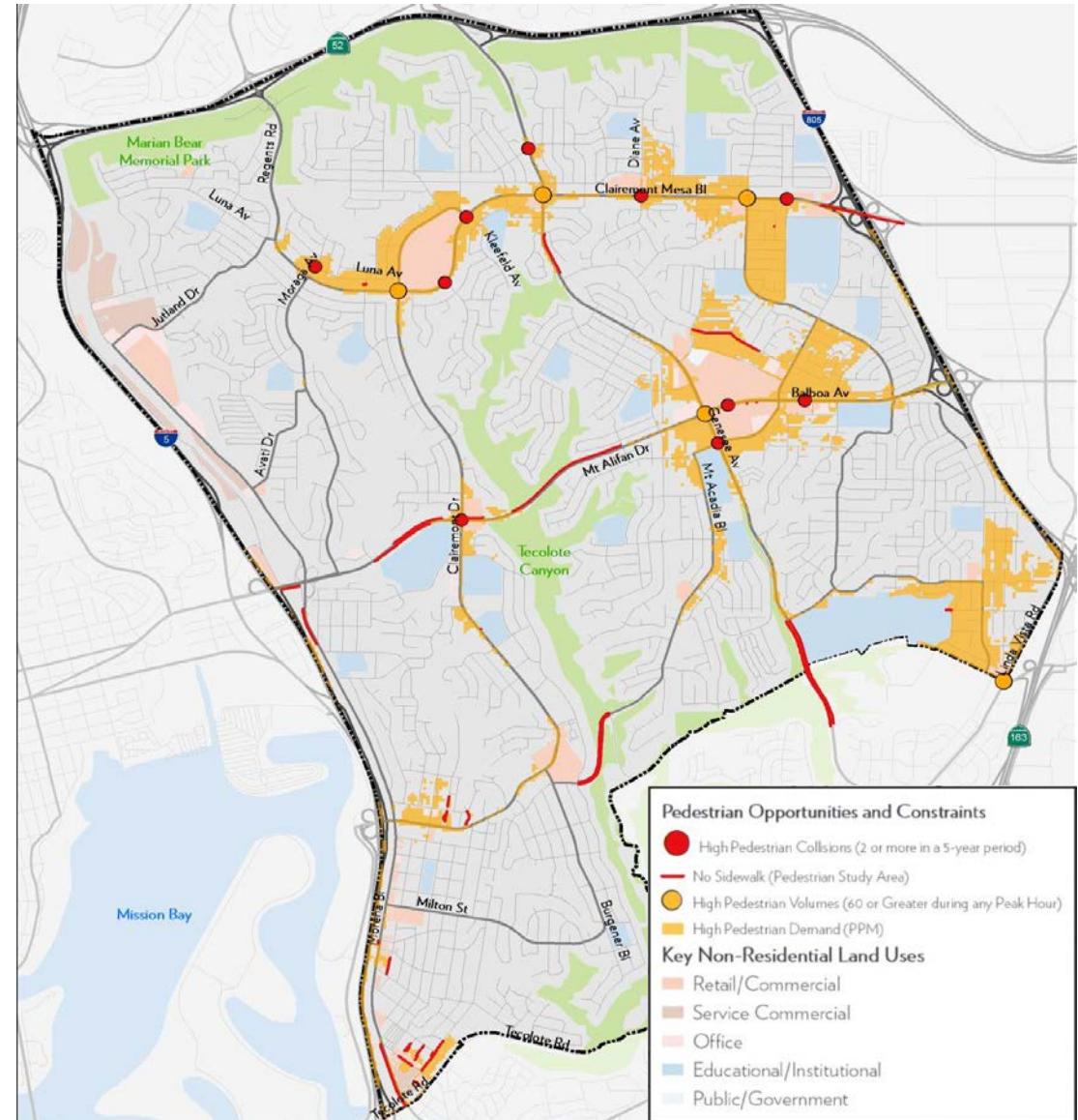
- Analyzed vehicle, bicycle, pedestrian and transit modes
- Completed in June 2017
- Download at <https://www.clairemontplan.org/documents>

The screenshot shows the 'Documents' page of the Clairemont Community Plan Update website. The page features a navigation bar with links for HOME, ABOUT, DOCUMENTS, NEWS, and GET ENGAGED. The main heading is 'Documents' with a sub-heading 'Reports, presentations, and other materials from the Clairemont Community Plan Update.' Below this, there are three sections: 'Clairemont Community Plan Update Ad Hoc Subcommittee Documents' with a link for 'Meeting #25' (June 11, 2019) and an 'Agenda (Forthcoming)' button; 'Studies and Technical Reports' with a paragraph explaining that technical reports and planning studies are being conducted to update the community plan; and 'Existing Conditions Map Atlas' (January 2018) with an 'Existing Conditions Map Atlas' button. At the bottom, there is a section for 'Mobility Existing Conditions Report' (June 2017) with 'Report' and 'Appendices' buttons.

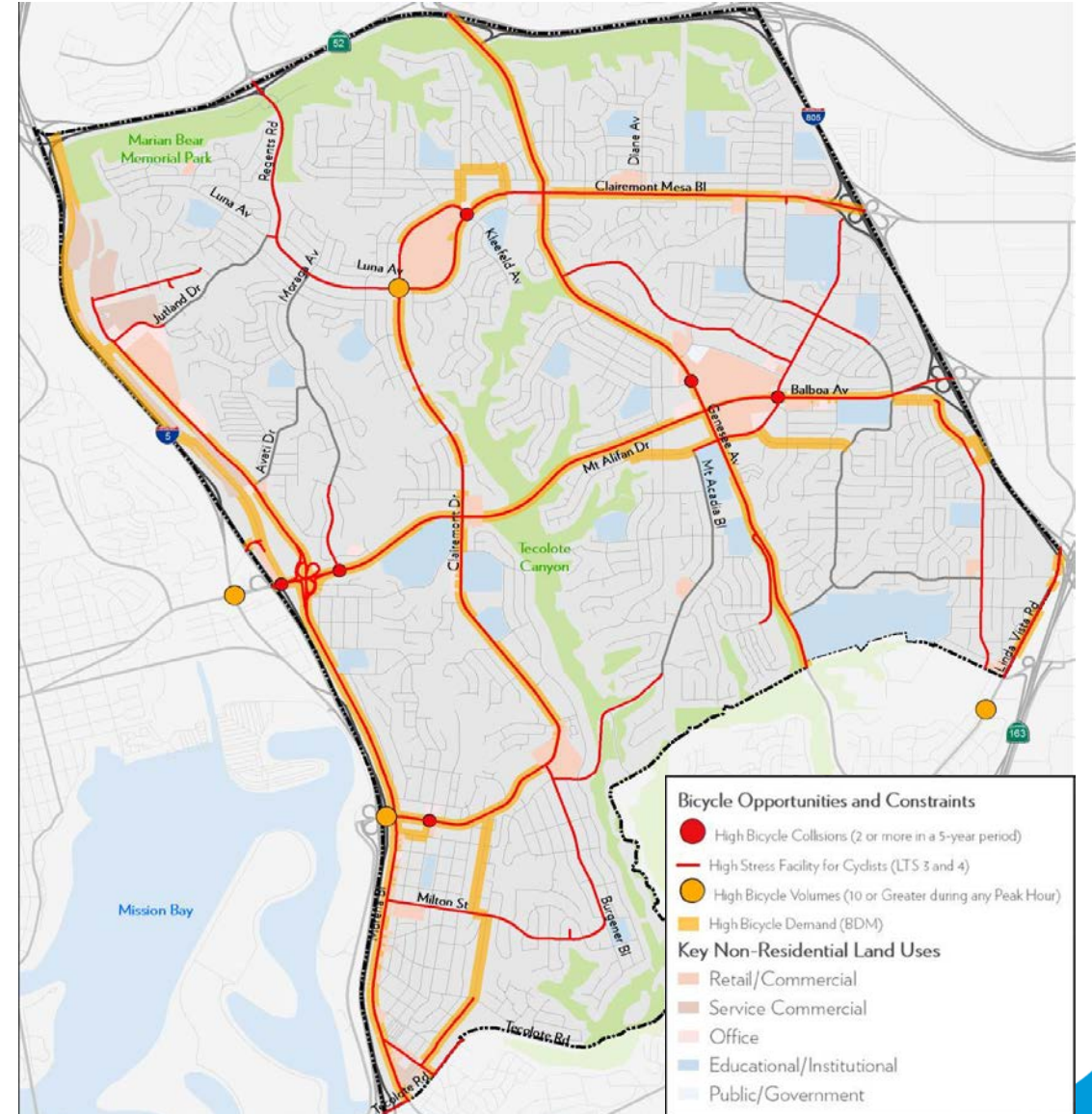
- Auto-centric
- Primarily residences
- Regional land uses:
 - Clairemont Town Square
 - Genesee Plaza
 - San Diego Mesa College
- Congestion near freeways
- Limited bicycle facilities
- Limited transit facilities



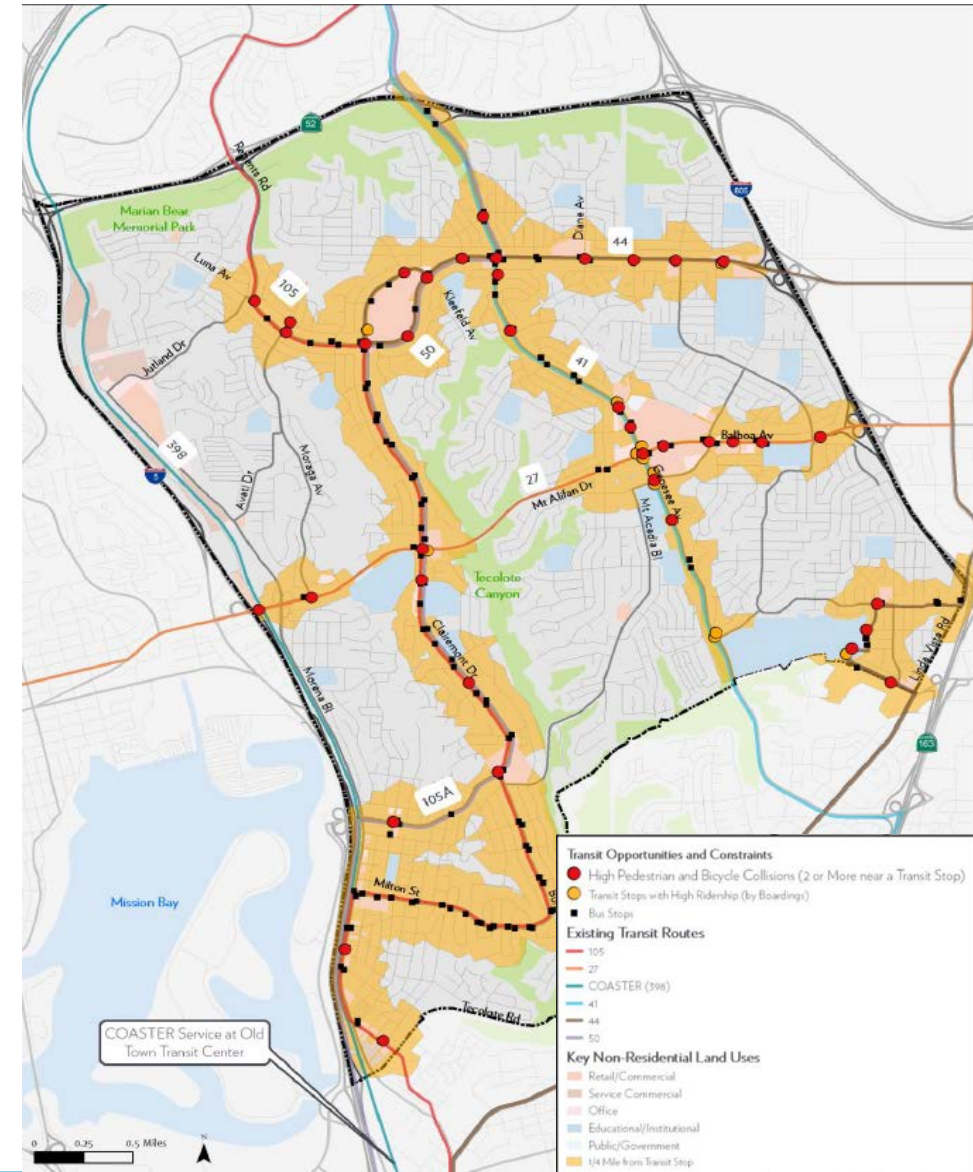
- High pedestrian volume on Clairemont Mesa Blvd
- Pedestrian collisions
 - Clairemont Mesa Blvd
 - Balboa Ave
 - Genesee Ave



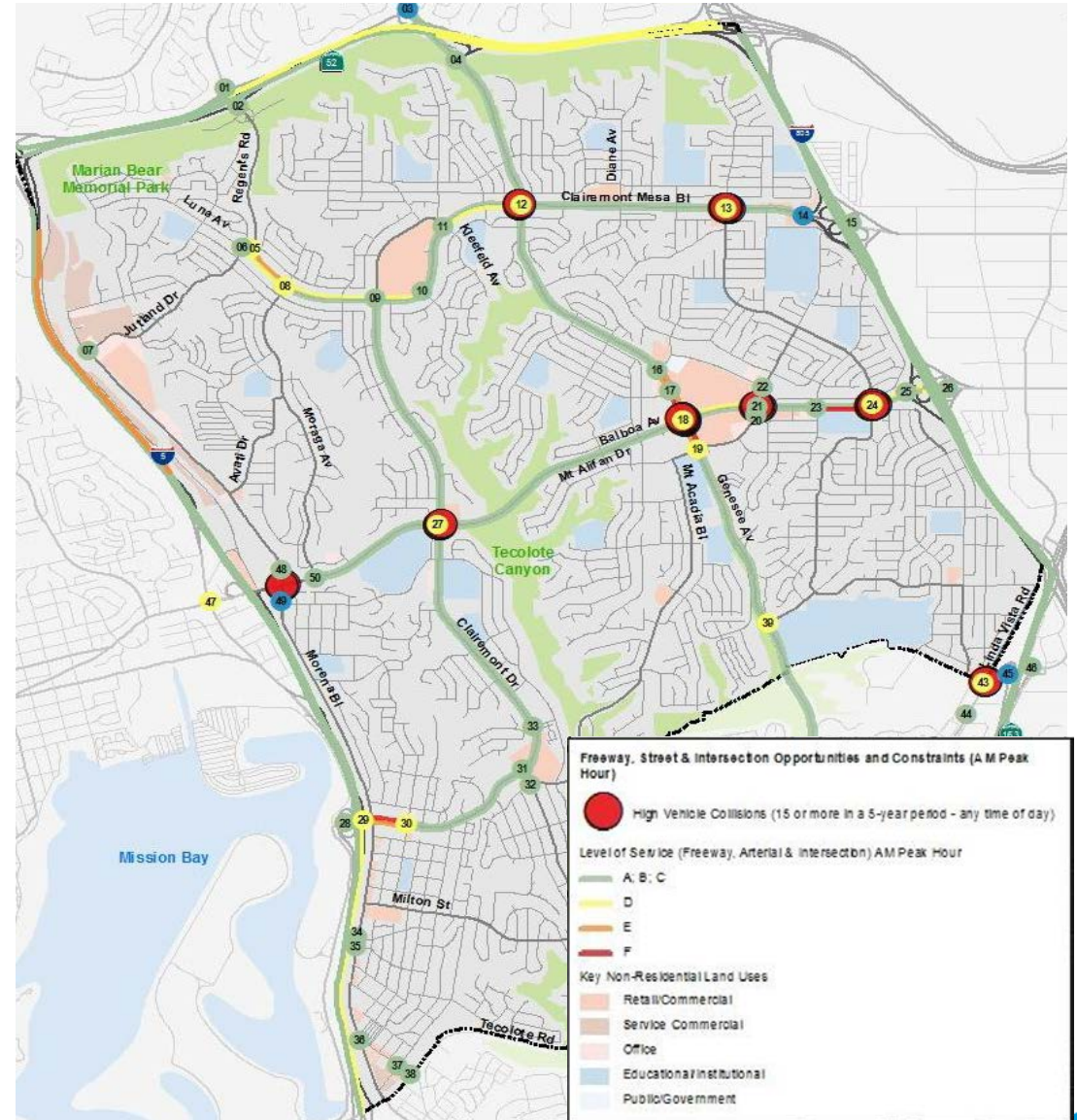
- High bicycle volume
Clairemont Dr/Clairemont
Mesa Blvd
- High stress facilities on all
major roadways
 - Regents Rd
 - Clairemont Dr
 - Clairemont Mesa Blvd
 - Genesee Ave
 - Morena Blvd
 - Balboa Ave



- Large areas within ¼ mile of a transit stop
- Lack of high-quality transit services (light rail, BRT)
- Bus routes strongly affected by roadway congestion

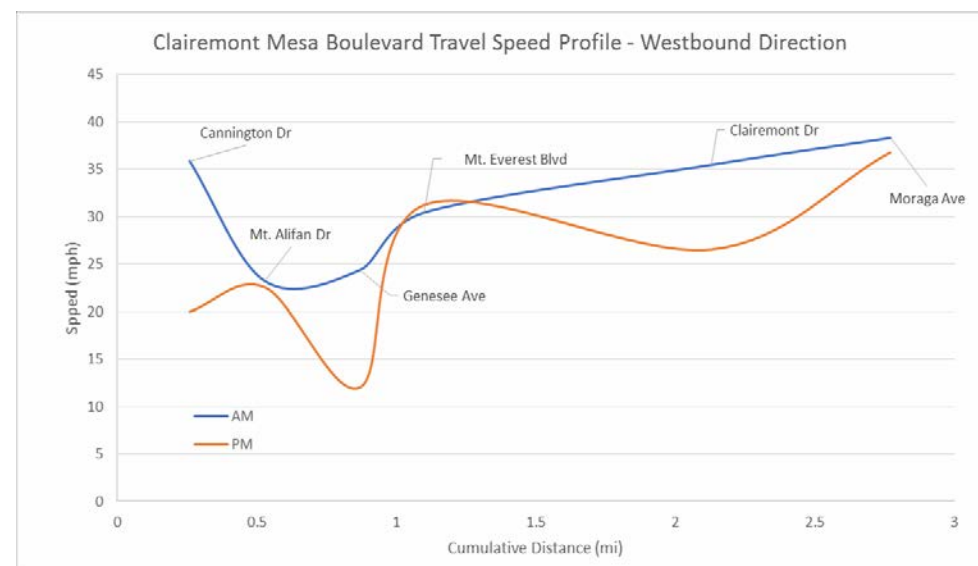
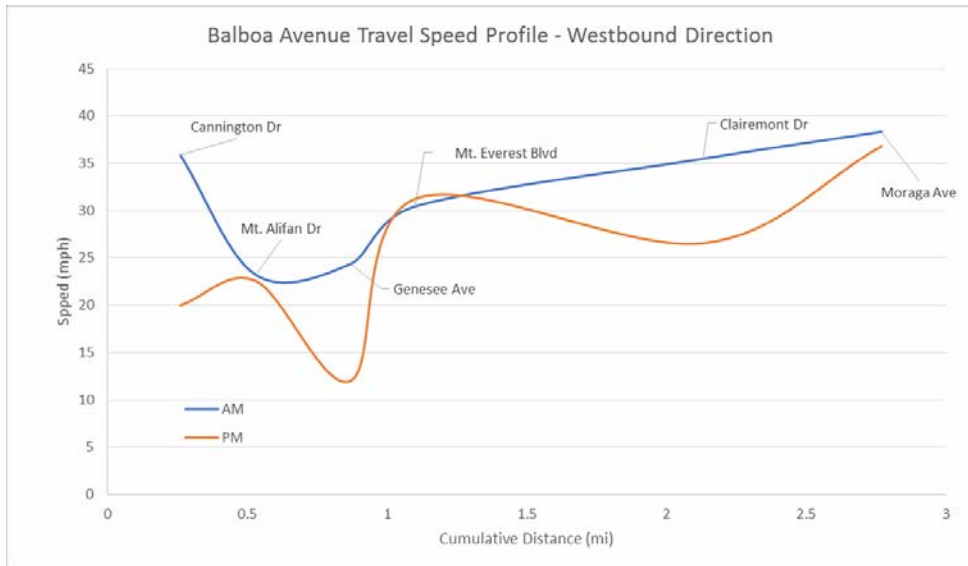
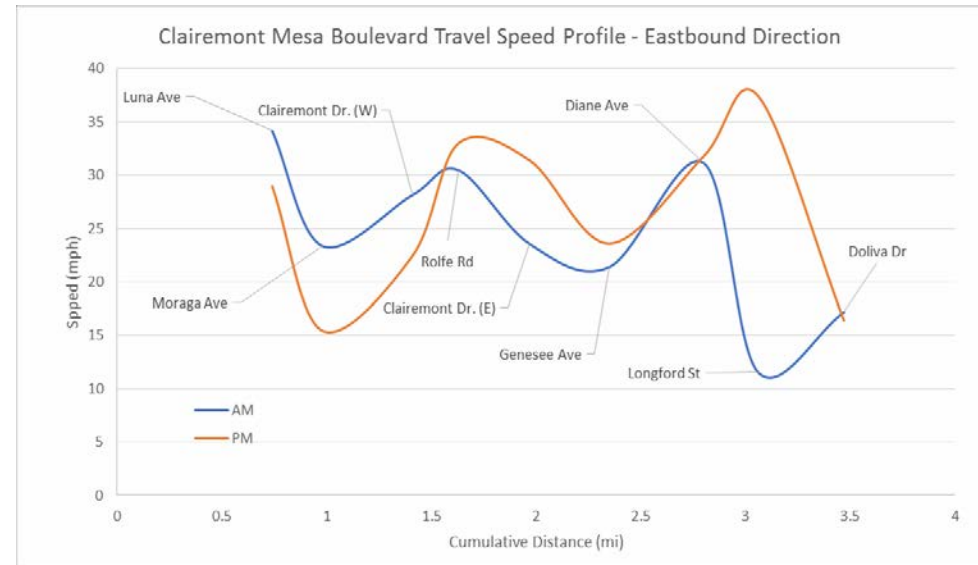
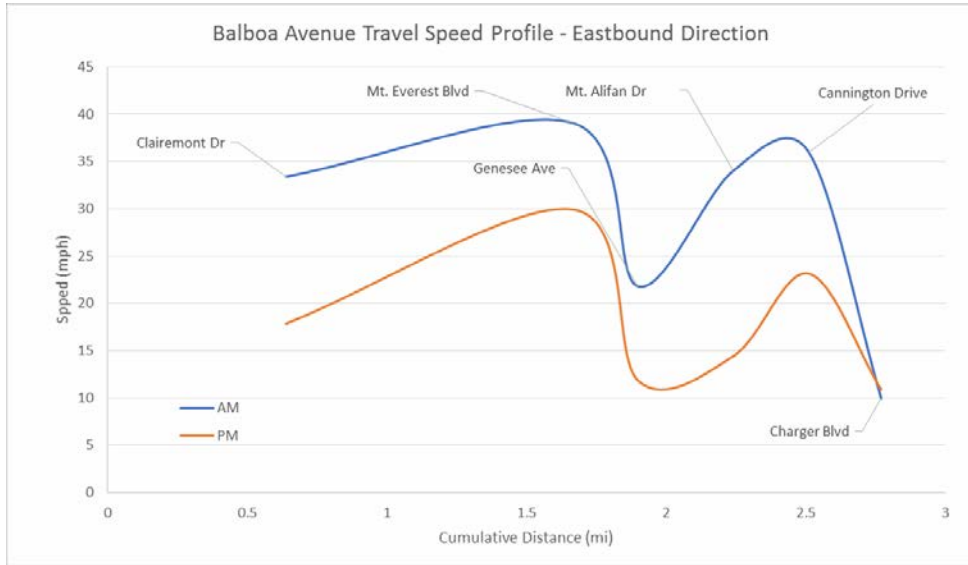


- Accessible by freeways: I-5, SR-163, I-805, and SR-52
- Balboa Ave experiences the worst intersection congestion
 - Has the highest intersection vehicle collisions
- Genesee Ave has congestion near SR-52
- Clairemont Mesa Blvd experiences congestion near retail and freeways





Clairemont Community Plan Update **Vehicle Issues & Needs**

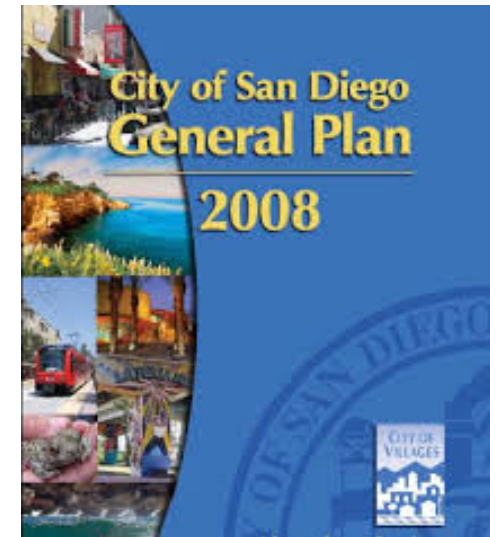




Existing Mobility Goals

Existing Transportation Goals

- To improve mobility through development of a balanced, multi-modal transportation network.
- A complete, functional, and interconnected pedestrian network, that is accessible to pedestrians of all abilities.
- A street and freeway system that balances the needs of multiple users of the public right-of-way.
- An interconnected street system that provides multiple linkages within and between communities.
- A safe transportation system
- Reduced single-occupant vehicle traffic on congested streets and freeways.
- Improved performance and efficiency of the street and freeway system, by means other than roadway widening or construction.
- Expanded travel options and improved personal mobility.

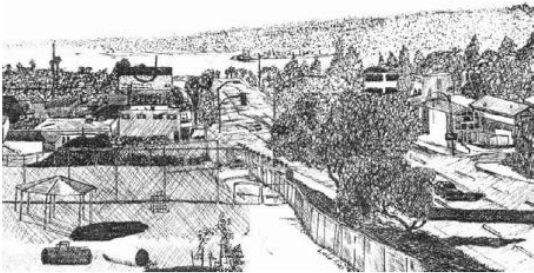


Existing Transportation Goals

- Improve the street system as necessary to accommodate the community's growth...
- Develop a bicycle system that will join parks and recreational areas, schools, and commercial activity centers in the community and City.
- Provide an efficient and high level of public transit within and surrounding the community.
- Enhance pedestrian circulation, particularly between higher density residential and commercial areas and to active and passive recreational facilities

Clairemont Mesa

Community Plan

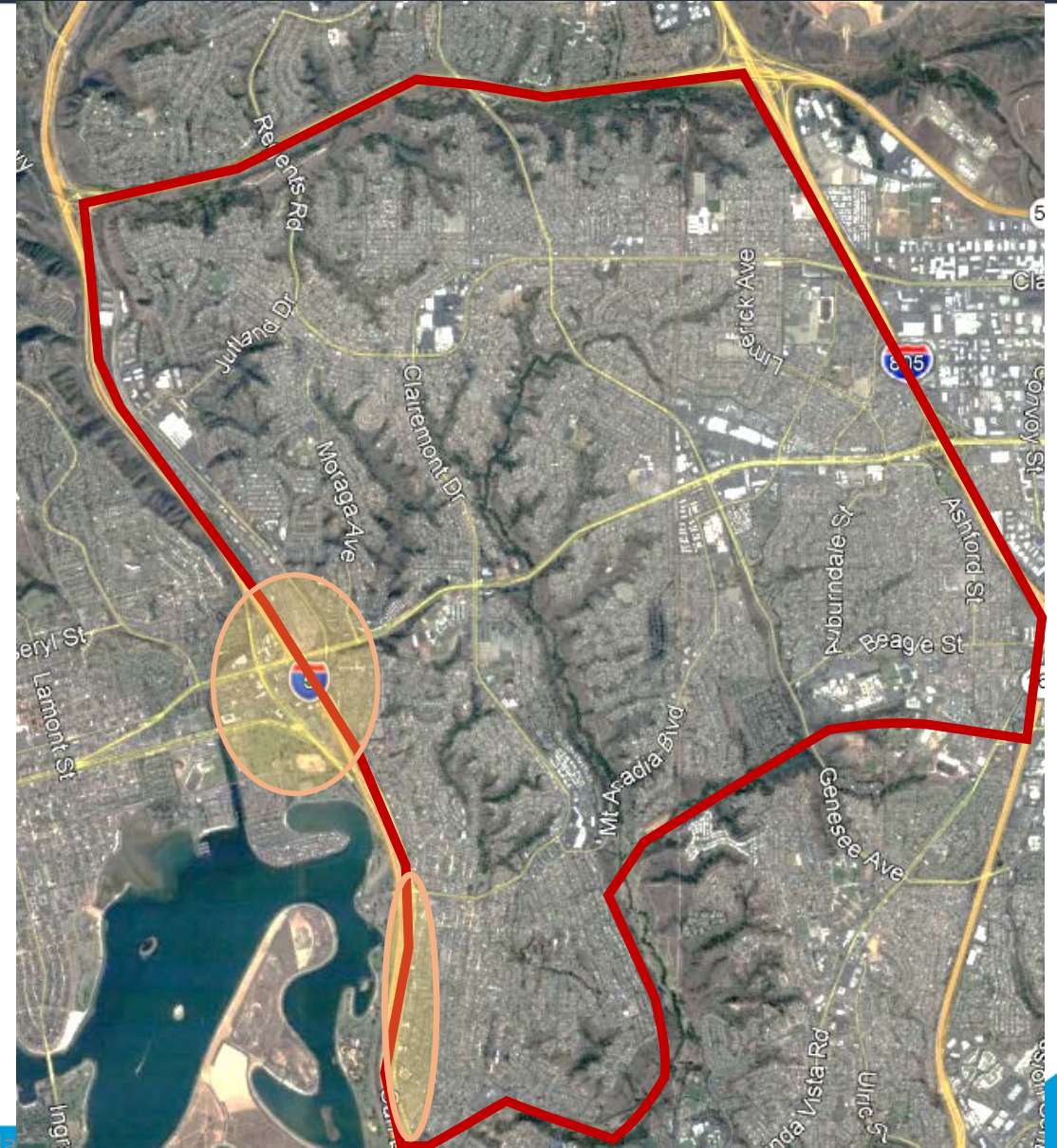
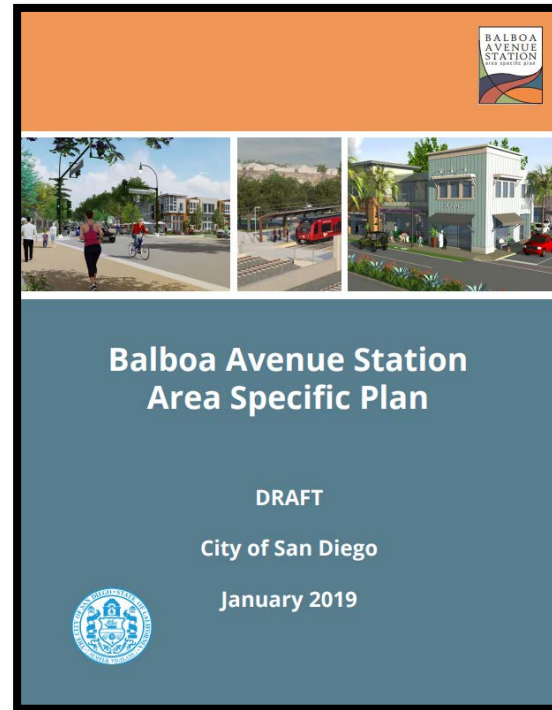




Clairemont Community Plan Update

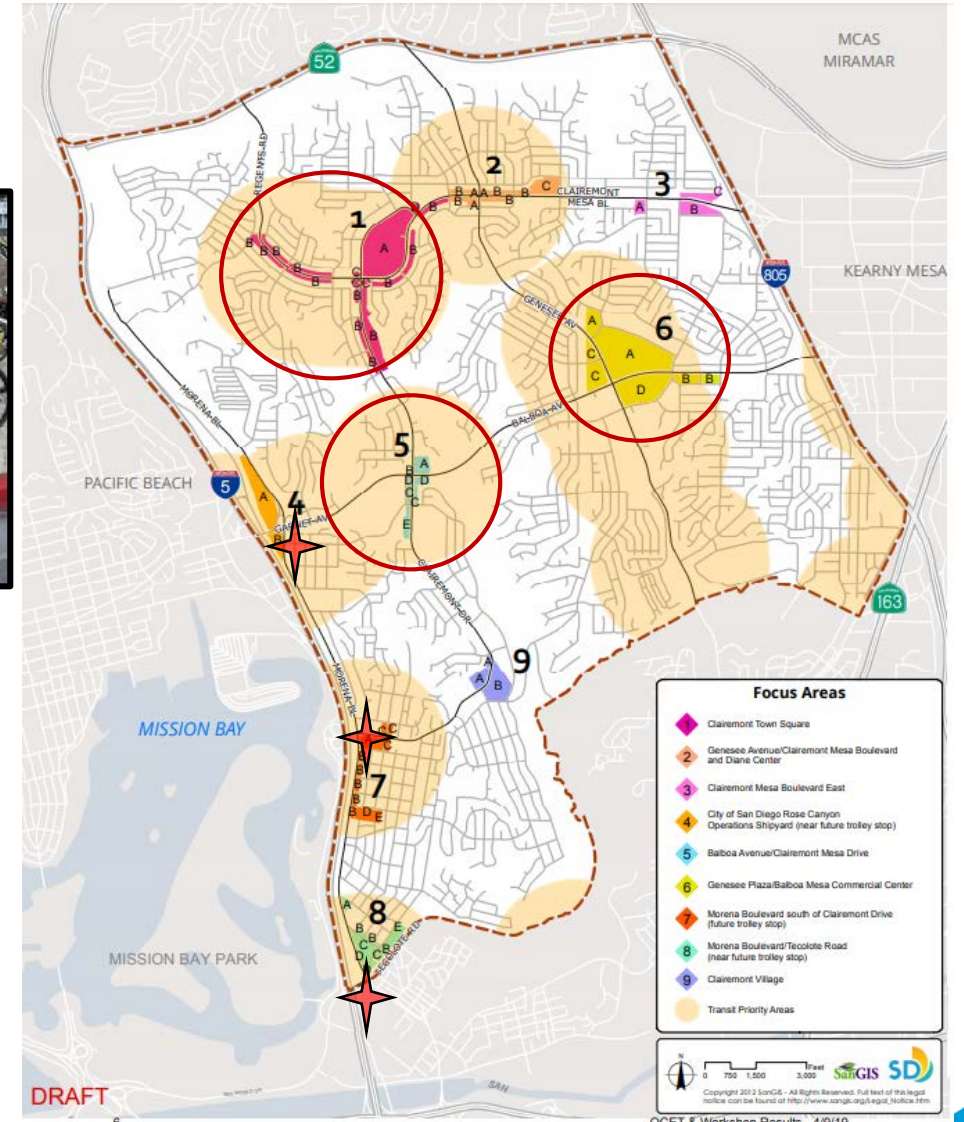
Potential Opportunities

- Balboa Station Specific Plan
- Morena Corridor Specific Plan

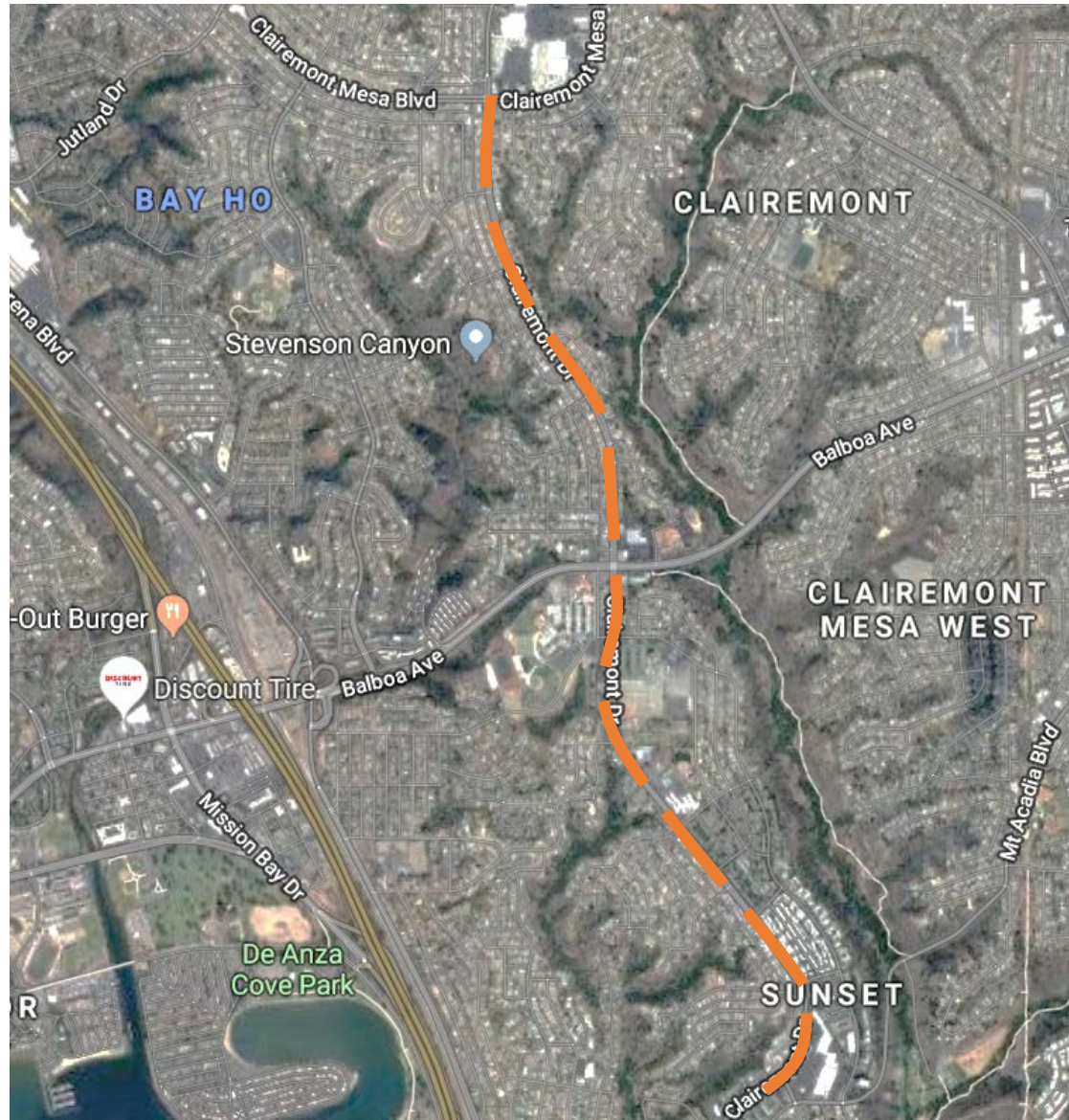




- Focus Areas 1, 5, and 6
- New trolley stops
- Emerging Technologies



- Clairemont Dr



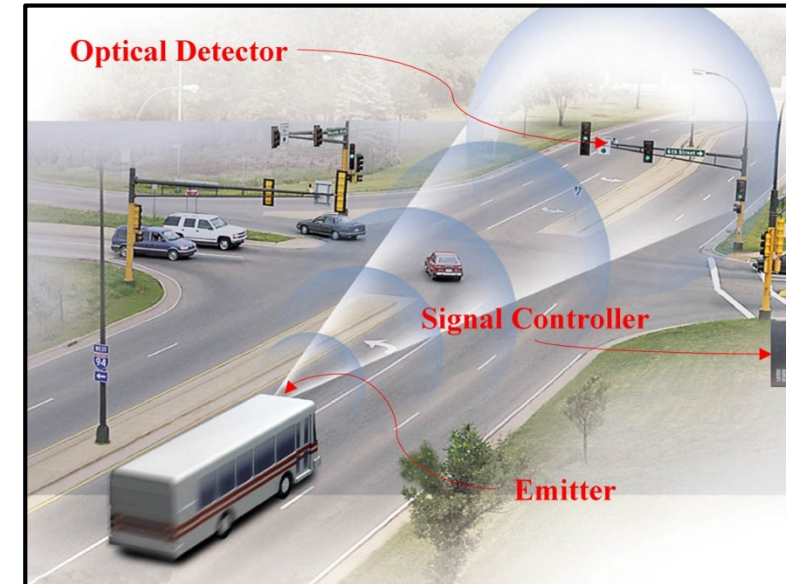
- Clairemont Dr
 - Transit priority treatments
 - Improving transit stop amenities



Quality Transit Amenities

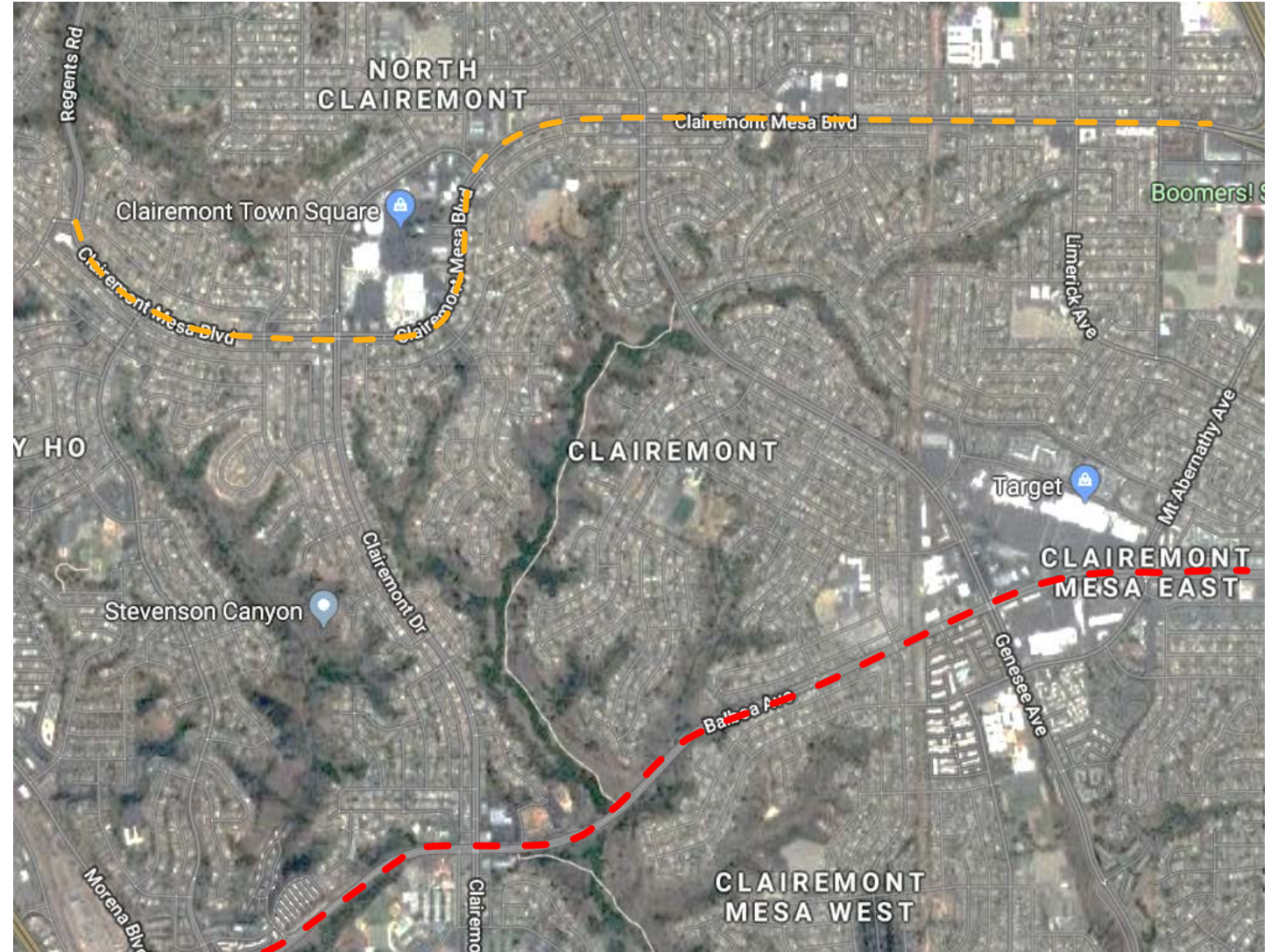


Bus Only Lane



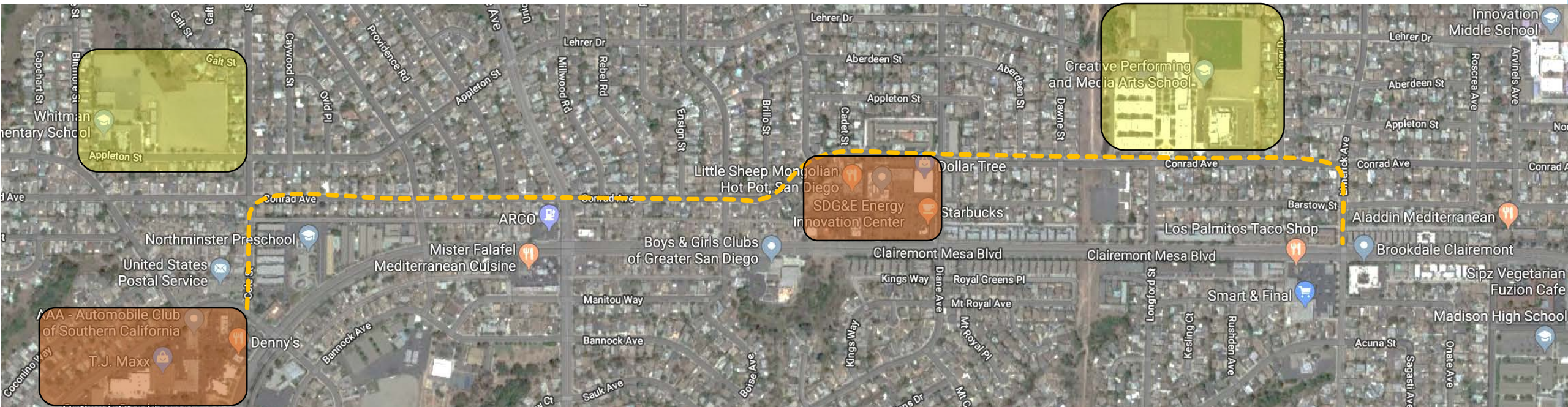
Transit Priority Signals

- Clairemont Mesa Blvd & Balboa Ave
- Adjusts red, yellow, and green lights to accommodate real-time demand
- 10% travel time reduction





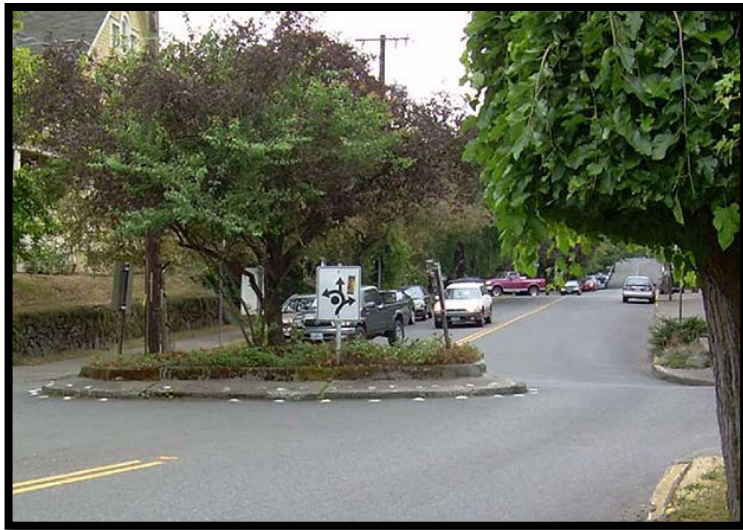
- Conrad Ave
 - Multi-use path on north side of road
 - Immediately adjacent to schools and retail



- On parallel streets to major roadways



- Parallel Streets to major roadways
 - Bike routes on low volume roadways
 - Traffic calming treatments
 - Reduce speeds and cut-through traffic



Traffic Circle



Speed Humps



Routing Restriction

- Incorporate land use into Transportation Forecast Model
- Refine mobility network
- Analyze 2050 Traffic Conditions



Clairemont

Engaged

For more information please visit:

<https://www.clairemontplan.org/>

