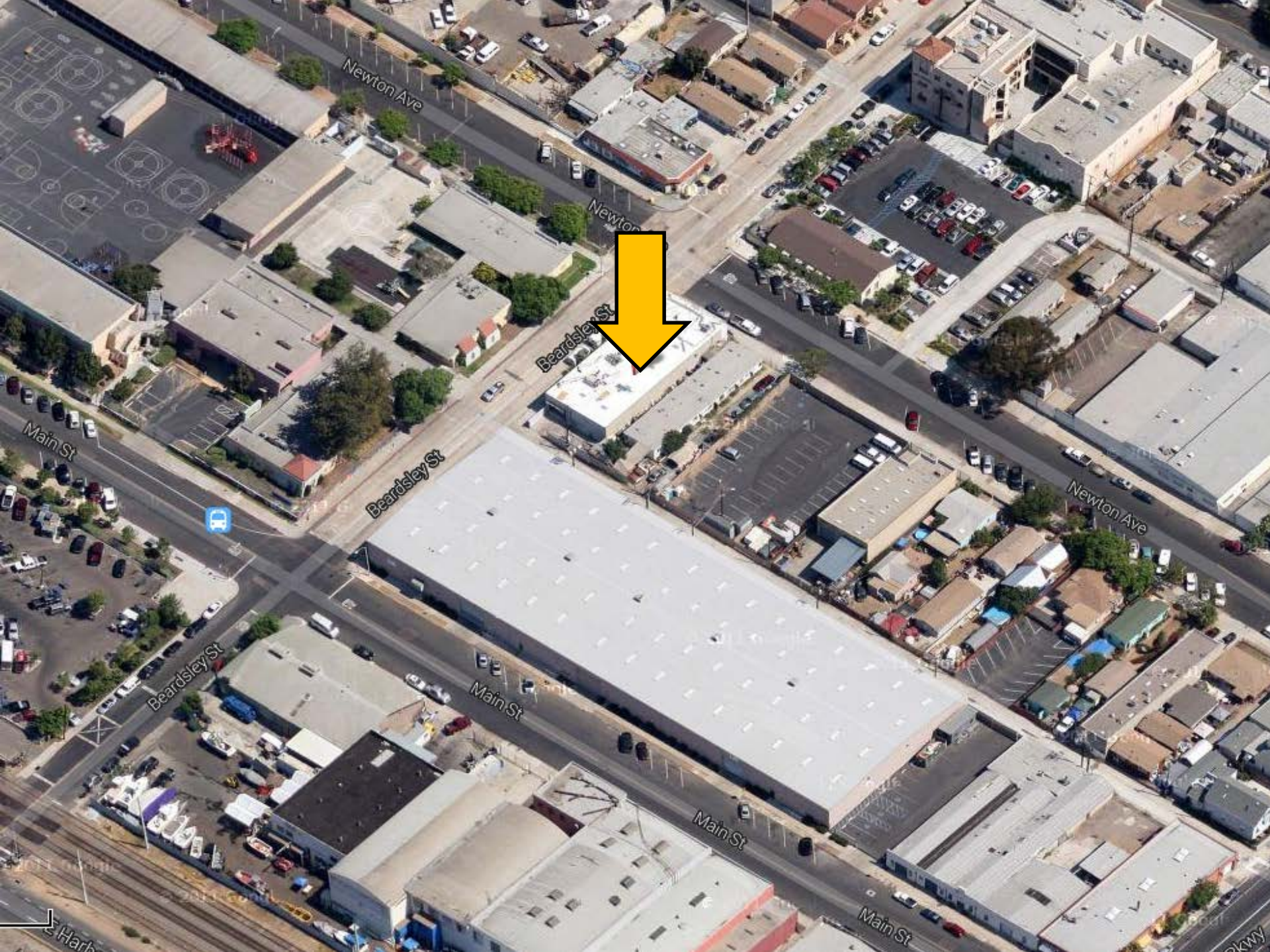


DIEGO VELASCO, AICP

Urban Design



Newton Ave

Newton

Beardsley St

Main St



Beardsley St

Newton Ave

Main St

Main St

Main St

Harb

kywy



NO TRUCKS
OVER TON
OF
OVER LOAD
CAPACITY

STEAKS &
BURGERS
Local BEER
→ CAKE ←

1805



M.W. STEELE GROUP
ARCHITECTURE | PLANNING

Architecture

Master planning

Policy planning

Urban design

Streetscape design

Visioning

Project management

Construction administration

Site evaluation

Feasibility studies

Programming

Interior design

Graphic design

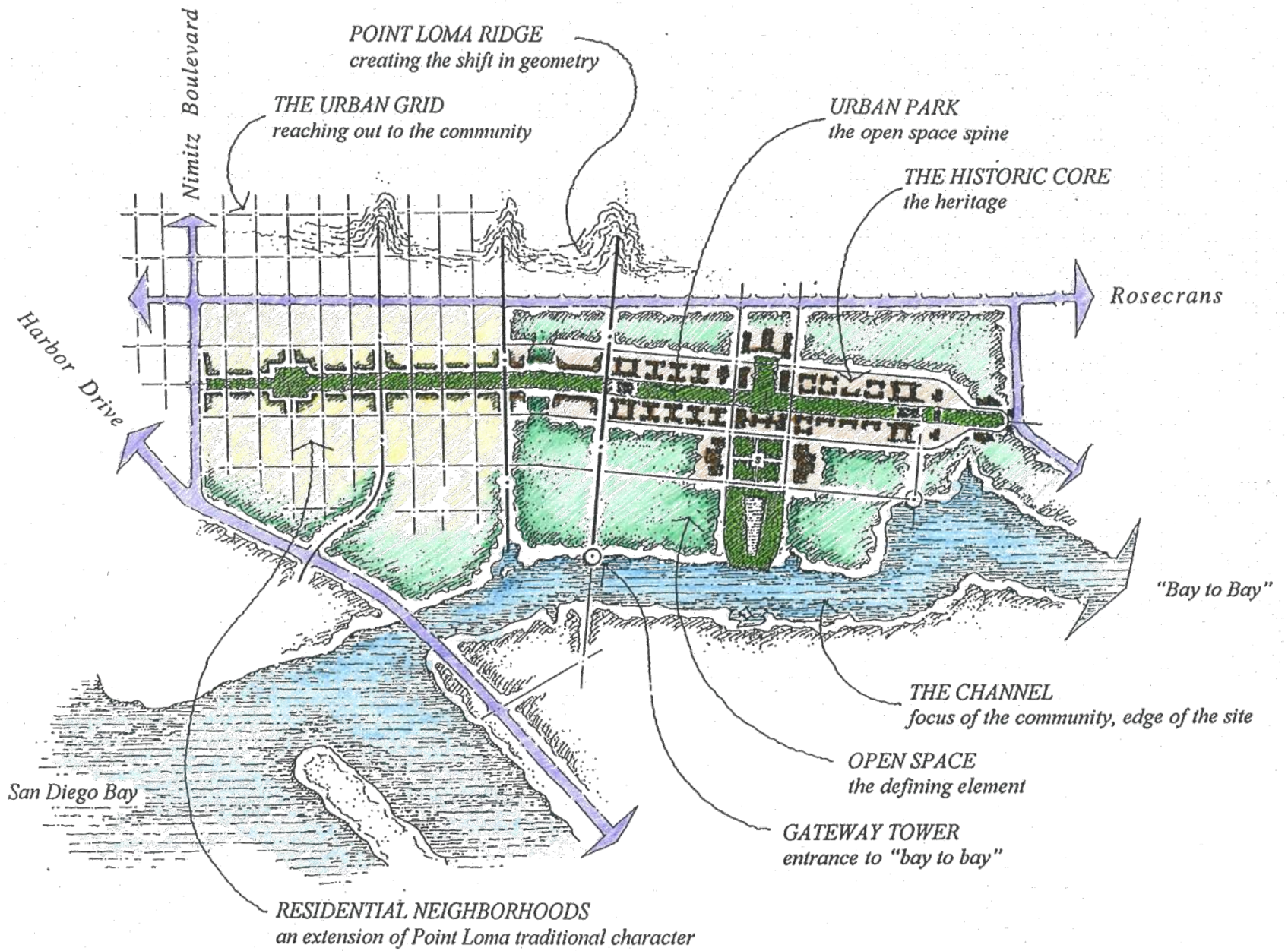
Community outreach

What is Urban Design?

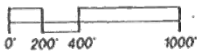
Shaping Public Spaces



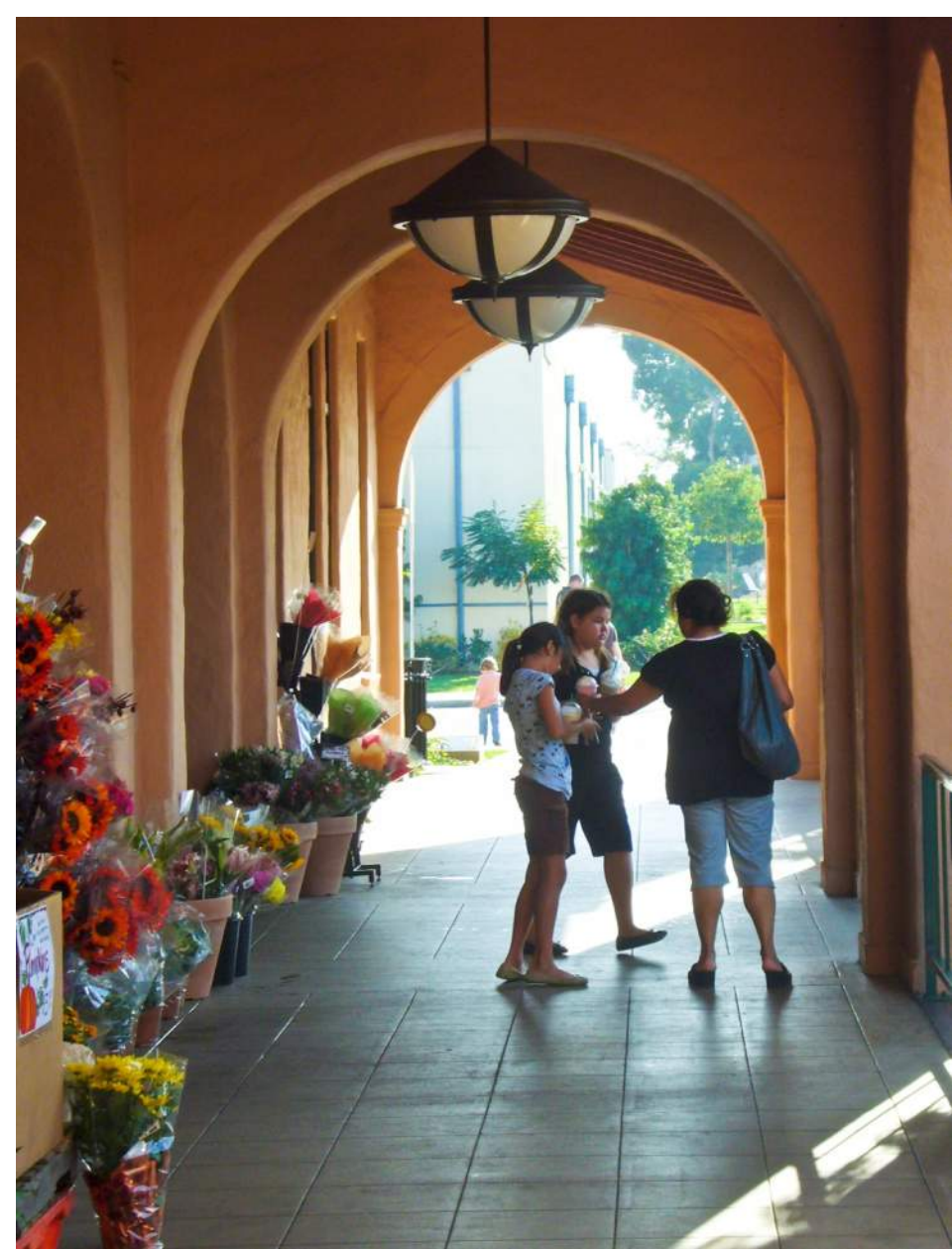
1



ORGANIZING CONCEPTS PLAN



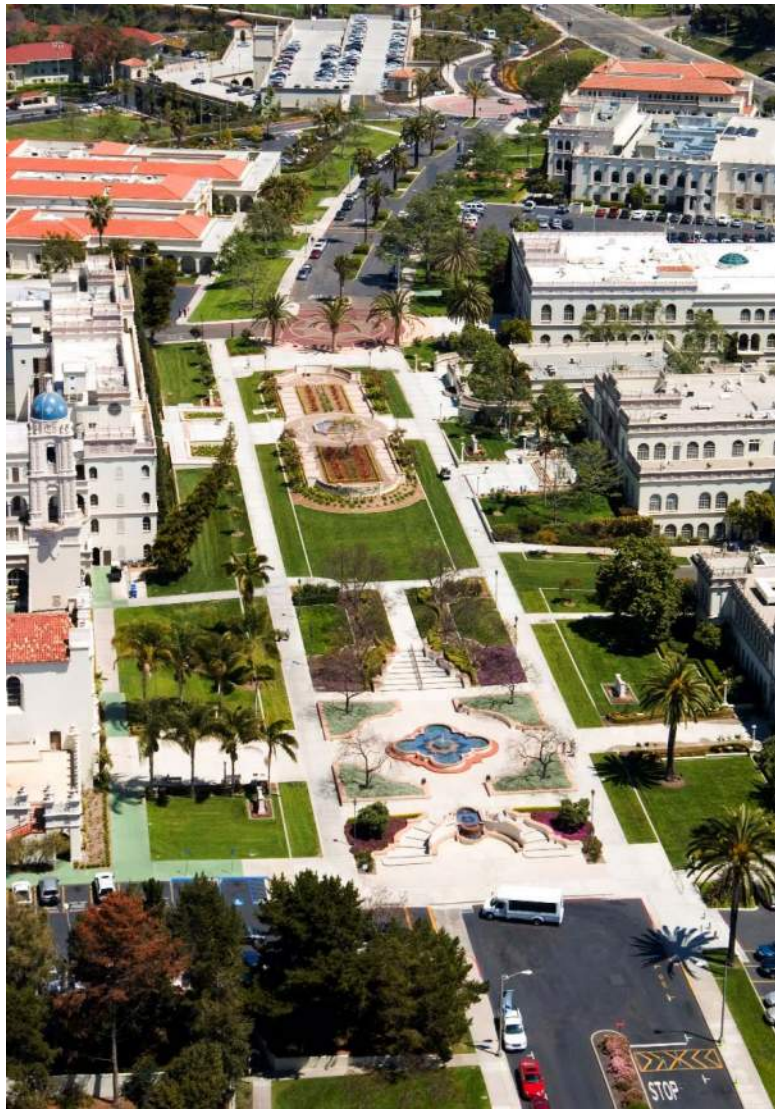
NORTH

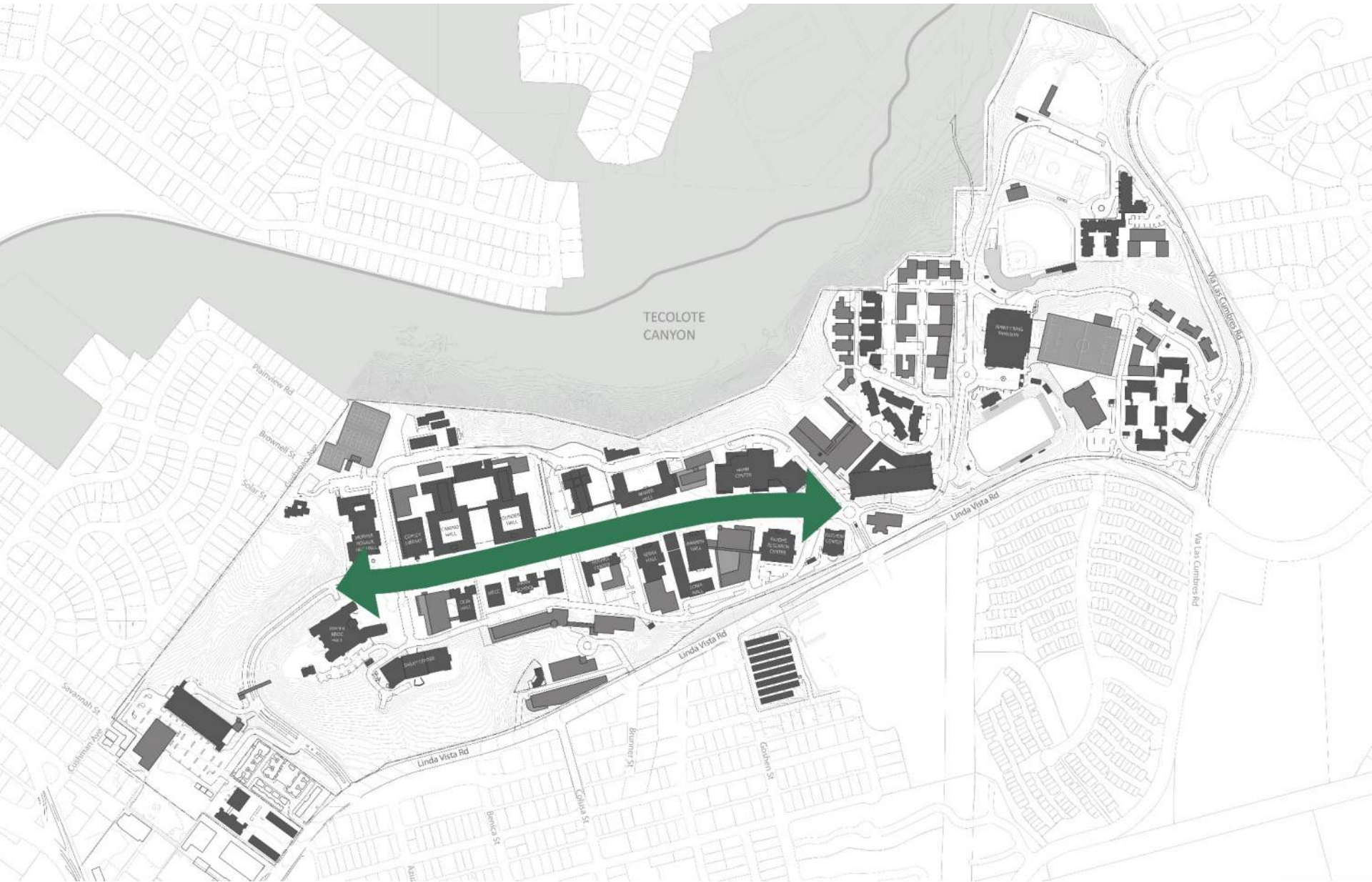


M.W. STEELE GROUP
ARCHITECTURE | PLANNING











TECOLOTE
CANYON





Embracing Streets











M.W. STEELE GROUP
ARCHITECTURE | PLANNING



3795

KALOS







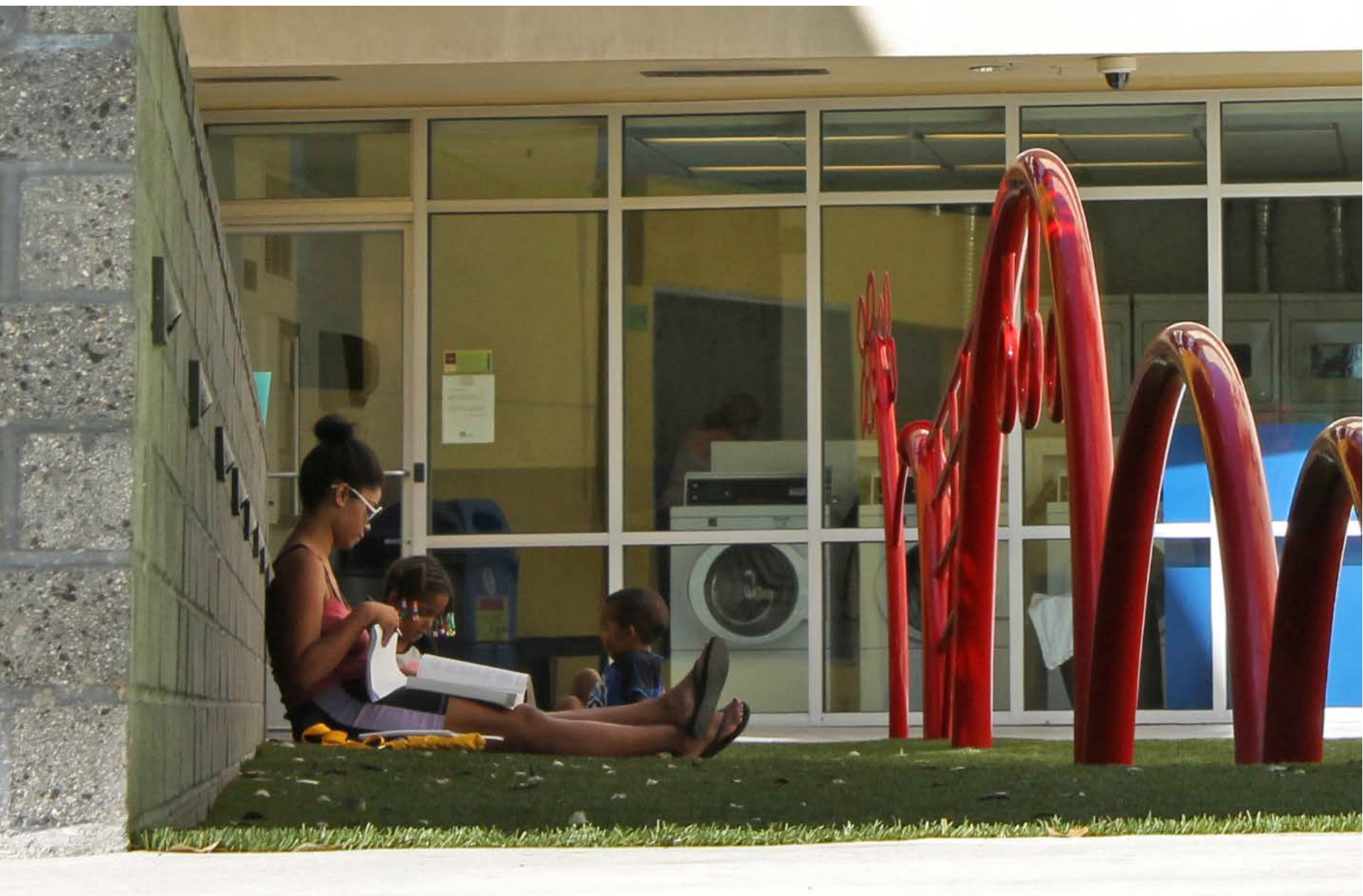
Making Comfortable Spaces

A photograph of a public park space. In the foreground, a curved stone water feature runs along the edge of a paved area. Several people are sitting on metal chairs along the water's edge, some looking towards the water. In the background, there are trees, a large building with a clock tower, and more people walking. The sky is clear and blue.



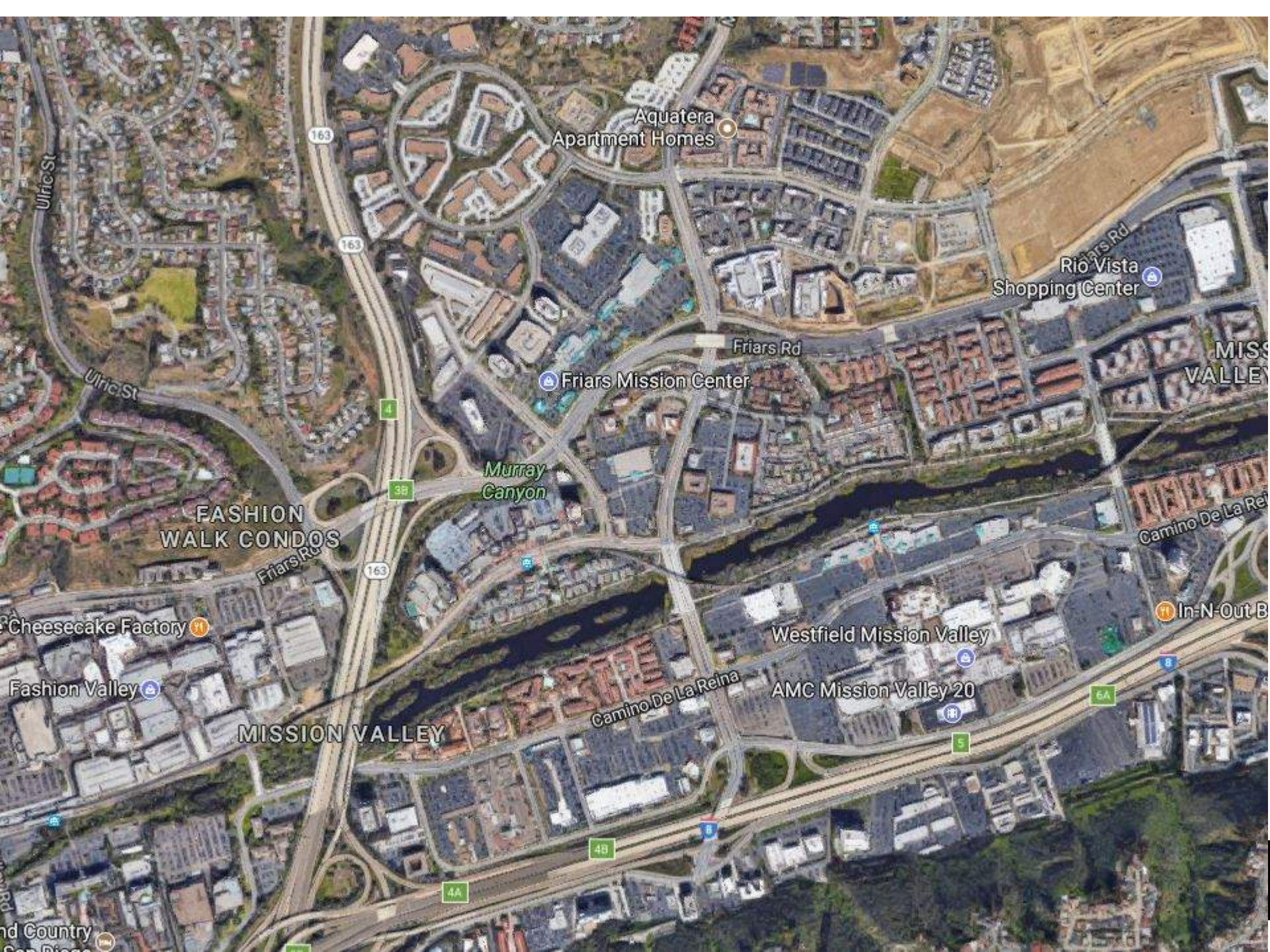






Creating Places not Projects

A vibrant outdoor dining area, likely a rooftop or terrace, featuring people seated at tables. The space is lush with greenery, including various plants and trees. In the background, a multi-story building with a tiled roof and large windows is visible under a clear blue sky with scattered clouds. The overall atmosphere is bright and social.



Aquatera
Apartment Homes

Rio Vista
Shopping Center

Friars Mission Center

Murray
Canyon

FASHION
WALK CONDOS

Cheesecake Factory

Fashion Valley

MISSION VALLEY

Westfield Mission Valley

AMC Mission Valley 20

In-N-Out B

nd Country
San Diego



SuperBlock A – Residential by the River



SuperBlock B – Office & Recreation



Trolley
Station

Neighborhood
Street

Gateway Bridge

Elevated Park

Plaza – Farmers
Market

Interior Commercial
Street

Greenway

River Front
Park

Active Ground
Floor by the River

Existing River
Walk



Transit Station

Plaza – Farmers
Market

River Front
Park and Plaza

Active Ground
Floor by the River





A Good Fit





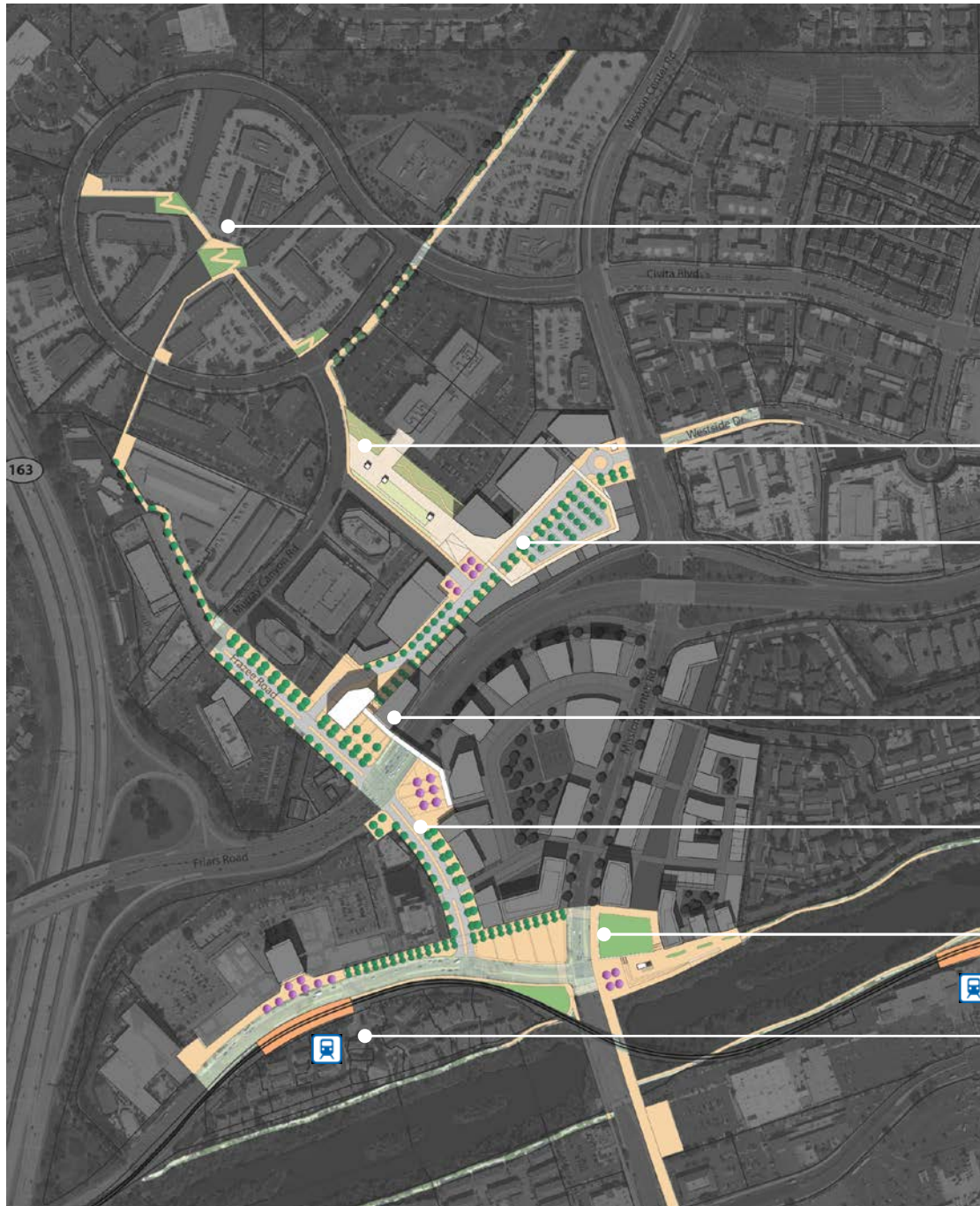
NOW LEASING
The 25 on Fifth
www.25onfifth.com
(619) 550-2069



A photograph of a modern brick building with a paved walkway lined with palm trees and a black metal gate in the distance. The scene is bright and sunny, with shadows cast on the ground. The building has large windows and a balcony. The walkway is made of light-colored concrete tiles. There are several palm trees of varying heights along the path. A black metal gate is visible in the background, leading to a parking area where a truck is parked. The overall atmosphere is clean and well-maintained.

Making Better Connections

6



1- Pedestrian Path

2- Elevated Park

3- Interior Commercial Street

4- Pedestrian Bridge - Gateway

5- Neighborhood Street – Frazee Rd

6- Bridge Anchor / River Highlight

7- Trolley Station Highlight

What is Urban Design in Clairemont?



M.W. STEELE
GROUP, INC.

1805 NEWTON AVENUE | SUITE A

SAN DIEGO | CA | 92113

TELEPHONE 619 230 0325

FACSIMILE 619 230 0335

www.mwsteele.com

ARCHITECTURE | PLANNING

**THE MOST POWERFUL AND ENDURING
THING WE BUILD IS COMMUNITY.**